

14-38 COWPER ST, 21-41 EAST ST, 5-5A ROWELL ST GRANVILLE NSW 2142 PUBLIC DOMAIN CIVIL WORKS



LOCATION OF SITE

LOCALITY PLAN
NOT TO SCALE

DEVELOPMENT APPLICATION

IMPORTANT NOTES: Do not scale from drawings. All dimensions shall be checked on site before commencement of work. All discrepancies shall be brought to the attention of the Architect. Larger scale drawings and written dimensions take precedence. This drawing is copyright and the property of the author, and must not be retained, copied or used without the express authority of MARCHESE PARTNERS ENGINEERING PTY. LTD.	REVISION	DATE	DESCRIPTION	BY
	A	2016.11.10	PRELIMINARY ISSUE FOR COORDINATION	LP
	B	2016.11.16	DEVELOPMENT APPLICATION	LP
DEVELOPMENT APPLICATION	C	2016.11.17	DEVELOPMENT APPLICATION	LP
	D	2017.02.03	DEVELOPMENT APPLICATION	LP
marchesepartners engineering Marchese Partners Engineering Pty Ltd Level 1, 53 Walker Street, North Sydney, NSW 2060, Australia P +61 2 9922 4375 F +61 2 9929 5786 E Info@marchesepartners.com.au www.marchesepartners.com.au Sydney • Brisbane • Canberra • Melbourne • Adelaide • Perth Kuala Lumpur • Auckland ABN 32 604 104 378				
CLIENT DPG PROJECT 7 PTY LTD				
DRAWING TITLE TITLE SHEET & LOCALITY PLAN				
PROJECT 14-38 COWPER ST, 21-41 EAST ST, 5-5A ROWELL ST GRANVILLE NSW 2142		SCALE NTS@A1 NTS@A3	DATE 10.11.2016	DRAWN TF
JOB 0991		DRAWING DA-C-001	CHECKED LP REVISION D	

LEGEND

LINETYPES

	BOUNDARY
	EASEMENT
	FENCE
	OVERFLOW
	RAINWATER RE-USE
	SIPHONIC DRAINAGE
	SUBSOIL DRAINAGE
	SUBSOIL RISING MAIN
	STORMWATER DRAINAGE
	STORMWATER RISING MAIN
	GREASE WASTE
	GREASE WASTE VENT
	SEWER CHAMBER VENT
	GRAVITY SEWER / SANITARY DRAINAGE
	SEWER PUMPOUT
	SEWER RISING MAIN
	TRADE WASTE DRAINAGE
	TRADE WASTE VENT
	DIESEL EXHAUST
	FIRE HYDRANT
	FIRE HYDRANT PRESSURE GAUGE
	FIRE HOSE REEL
	FIRE SPRINKLER
	COLD WATER
	FILTERED RAINWATER RE-USE
	HOT WATER FLOW
	HOT WATER RETURN
	IRRIGATION
	NON-POTABLE COLD WATER
	RECYCLED COLD WATER
	WARM WATER FLOW
	WARM WATER RETURN
	NATURAL GAS
	MEDICAL GASES - COMPRESSED AIR
	MEDICAL GASES - CARBON DIOXIDE
	MEDICAL GASES - NITROUS OXIDE
	MEDICAL GASES - OXYGEN
	ELECTRICAL WIRING
	ELECTRICAL CONDUIT

SERVICES & UTILITIES

	EXISTING ELECTRICAL
	EXISTING GAS
	EXISTING OIL
	EXISTING TELSTRA
	EXISTING SEWER
	EXISTING STORMWATER
	EXISTING WATER
	EXISTING SERVICE TO BE ABANDONED

NOTE
"X" ON SERVICE LINE DENOTES EXISTING SERVICE.
"X" ON SERVICE LINE DENOTES SERVICE TO BE ABANDONED.

EROSION & SEDIMENT SYMBOLS

	BARRIER FENCE
	SILT FENCE
	TOP OF BATTER
	BOTTOM OF BATTER
	STABILISED CONSTRUCTION SITE VEHICLE ENTRY/EXIT GRID
	STRAW BALE SEDIMENT FILTER

DRAWING INFORMATION SYMBOLS

	SCALE 1:100
	SECTION No.
	DRAWING REFERENCE No.
	DETAIL No.
	DRAWING REFERENCE No.
	AMENDMENT REFERENCE

ABBREVIATIONS, SYMBOLS AND LINETYPES IN THE LEGEND MAY NOT APPEAR ELSEWHERE ON THE DRAWINGS. THIS LEGEND SHOULD BE USED AS A GUIDE ONLY

HYDRAULIC SERVICES SYMBOLS

	VERTICAL RISER IN DRAINAGE
	CLEAROUT OR INSPECTION OPENING
	DRAINAGE TURN-UP
	FLOW DIRECTION ARROW
	PENETRATION CORE THROUGH STRUCTURAL ELEMENT
	DOWNPIPE (150mm DIAMETER)
	RISER
	DROPPER
	DROPS TO BELOW / RISES FROM BELOW
	CAPPED OFF SERVICE
	CONTINUATION OF SERVICE NOT SHOWN
	CONTINUATION OF SERVICE SHOWN ELSEWHERE
	FLANGED CONNECTION
	SERVICE CAST IN SLAB
	SERVICE CONCRETE ENCASED
	GAS REGULATOR
	VENTED GAS REGULATOR
	UTILITY REGULATOR
	SOLENOID VALVE
	ISOLATION VALVE
	BALANCING VALVE (STAD)
	CHECK VALVE
	BACKFLOW PREVENTION DEVICE
	PRESSURE LIMITING VALVE
	PRESSURE REDUCTION VALVE
	STRAINER
	METER
	THERMOSTATIC MIXING VALVE
	FILTER
	PUMP
	HOSE TAP
	COLD WATER POINT
	HOT WATER POINT
	FIRE HYDRANT
	DOUBLE PILLAR FIRE HYDRANT STANDPIPE
	FIRE HOSE REEL
	PRESSURE GAUGE
	TEMPERATURE GAUGE
	THRUST BLOCK
	BOUNDARY TRAP
	INDUCT PIPE MICA FLAP
	OVERFLOW RELIEF GULLY
	TUNDISH
	WATER CLOSET (S-TRAP)
	WATER CLOSET (P-TRAP)
	BASIN
	NOMINAL
	SINK
	DISHWASHER
	FLOOR WASTE
	BUCKET TRAP FLOOR WASTE
	REFLUX VALVE
	AIR ADMITTANCE VALVE
	SEWER MANHOLE (CAC)
	GREASE ARRESTER
	RAINWATER OUTLET
	SQUARE RAINWATER OUTLET
	SPREADER
	RAINWATER HEAD
	STORMWATER PIT (ACCESS ONLY)
	STORMWATER PIT (INLET)
	KERB ENTRY PIT
	GRATED TRENCH DRAIN
	FALL ARROW
	OVERLAND FLOW PATH DIRECTIONAL ARROW
	STORMWATER HEADWALL
	SWALE OR SPEED HUMP
	ELECTRICAL CONTROL PANEL
	DIRECTION OF FLOW
	SERVICE
	SIZE

GENERAL ABBREVIATIONS

AAV	AIR ADMITTANCE VALVE
AB	ACCESSIBLE BASIN
AC	AIR CONDITIONING
AV	AIR RELEASE VALVE
AWC	ACCESSIBLE TOILET (WATER CLOSET)
B	BASIN
BG	BOX GUTTER
BGO	BOX GUTTER OUTLET
BT	BOUNDARY TRAP
BTFW	BUCKET TRAP FLOOR WASTE
BTH	BATH
BWU	BOILING WATER UNIT
CAC	CIRCULAR ACCESS CHAMBER
CHVP	CHAMBER VENT PIPE
CTS	CENTRES
CL	CENTRE LINE
CI	CAST IRON
CIC	CAST IN COLUMN
CIS	CAST IN SLAB
CO	CLEAR OUT
Cu	COPPER
CW	COLD WATER
DI	DUCTILE IRON
DIA	DIAMETER
DP	DOWN PIPE
DPFH	DOUBLE PILLAR FIRE HYDRANT
DST	DRAINAGE STACK
DTU	DRAINAGE TURN-UP
DWG	DRAWING
ED	ELEVATED DRAINAGE
EGL	EXISTING GROUND LEVEL
EGO	EAVES GUTTER OUTLET
EJ	EXPANSION JOINT
EX	EXISTING
FFL	FINISHED FLOOR LEVEL
FH	FIRE HYDRANT
FHR	FIRE HOSE REEL
FSC	FIRE STOP COLLAR
FW	FLOOR WASTE
GALV	GALVANISED
GDO	GRATED DRAIN OUTLET
GMS	GALVANISED MILD STEEL
GVP	GREASE VENT PIPE
HD	HEAVY DUTY
HDC	HEAVY DUTY COVER
HOG	HEAVY DUTY GRATE
HDPE	HIGH DENSITY POLYETHYLENE
HL	HIGH LEVEL
HP	HIGH POINT
HT	HOSE TAP
HW	HOT WATER
HWU	HOT WATER UNIT
ID	INTERNAL DIAMETER
IL	INVERT LEVEL
IO	INSPECTION OPENING
IPMF	INDUCT PIPE MICA FLAP
KEP	KERB ENTRY PIT
KFW	KITCHEN FLOOR WASTE
KO	KEY OPERATED
LDC	LIGHT DUTY COVER
LDG	LIGHT DUTY GRATE
LL	LOW LEVEL
L.O.C.	LIMIT OF CONTRACT
MAX.	MAXIMUM
MIN.	MINIMUM
NB	NOMINAL BORE
NG	NATURAL GAS
N.I.C.	NOT IN CONTRACT
NOM	NOMINAL
No.	NUMBER
NTS	NOT TO SCALE
OD	OUTSIDE DIAMETER
OIF	OVERFLOW
ORG	OVERFLOW RELIEF GULLY
P	PENETRATION
PLV	PRESSURE LIMITING VALVE
PRV	PRESSURE REDUCING VALVE
REV	REVISION
RL	REDUCED LEVEL
RO	RAINWATER OUTLET
RPZD	REDUCED PRESSURE ZONE DEVICE
RST	RECESSED STOP TAP
RTD	RECESSED TUNDISH
RV	REFLUX VALVE
RWH	RAINWATER HEAD
RWO	RAINWATER OUTLET

GENERAL ABBREVIATIONS CONT.

S	SINK
SHR	SHOWER
SMH	SEWER MANHOLE
SQ	SQUARE
SST	SOIL STACK
ST	STOP TAP
STD	STANDARD
STW	STORMWATER
SV	STOP VALVE (ISOLATION VALVE)
SWP	STORMWATER PIT
TBC	TO BE CONFIRMED
TD	TUNDISH
TG	TRENCH GRATE
TMV	THERMOSTATIC MIXING VALVE
TOK	TOP OF KERB
TTD	TRAPPED TUNDISH
TWL	TOP WATER LEVEL
TWVP	TRADE WASTE VENT PIPE
U.N.O.	UNLESS NOTED OTHERWISE
UPVC	UNPLASTICISED POLYVINYL CHLORIDE
UW	UTENSIL WASHING MACHINE
VB	VANITY BASIN / VACUUM BREAKER
VERT	VERTICAL
VP	VENT PIPE
WC	TOILET SUITE (WATER CLOSET)
WST	WASTE STACK

CIVIL ABBREVIATIONS

BWL	DRAINAGE LEVELS BOTTOM WATER LEVEL
IL	INVERT LEVEL
OL	OVERFLOW LEVEL
RL	REDUCED LEVEL
SL	SURFACE LEVEL
TWL	TOP WATER LEVEL

LD	GRATES & COVERS LIGHT DUTY CLASS 'B'
MD	MEDIUM DUTY CLASS 'C'
HD	HEAVY DUTY CLASS 'D'
EHD	EXTRA HEAVY DUTY CLASS 'E'
MP	MULTI PART COVER OR GRATE

DOP	DISCHARGE CONTROL PIT
JP	JUNCTION PIT
KEP	KERB ENTRY PIT
SWP	STORMWATER PIT

SS	DRAINAGE LINES SUBSOIL DRAINAGE
STW	STORMWATER DRAIN

CATCHMENT ABBREVIATIONS

L/s	LITRES PER SECOND
m³/s	METRES PER SECOND
CUMecs	CUBIC METRES PER SECOND
Q	QUANTITY OF FLOW

DRAWING NOTES

- DRAWINGS ARE DIAGRAMMATIC ONLY. FOR DIMENSIONS AND CONSTRUCTION DETAILS OF BUILDING REFER ARCHITECTURAL DRAWINGS AND SITE.
- PIPEWORK SIZES ARE NOMINAL BORE FOR COPPER AND CAST IRON AND INTERNAL BORE FOR POLYMER BASED PIPEWORK. REFER SPECIFICATION FOR MATERIAL TYPE.
- ALL PIPEWORK ON DRAWINGS IS SHOWN BELOW SLAB (OR GROUND) UNLESS NOTED OTHERWISE.

DRAWING LIST

DA-C-001	TITLE SHEET & LOCALITY PLAN
DA-C-002	LEGEND, ABBREVIATIONS & DRAWING LIST
DA-C-003	GENERAL NOTES
DA-C-004	SURVEY PLAN - SHEET 1
DA-C-005	SURVEY PLAN - SHEET 2
DA-C-006	EROSION AND SEDIMENT CONTROL PLAN - SHEET 1
DA-C-007	EROSION AND SEDIMENT CONTROL PLAN - SHEET 2
DA-C-008	EROSION AND SEDIMENT CONTROL DETAILS
DA-C-101	PUBLIC DOMAIN CIVIL WORKS LEVELS PLAN - SHEET 1
DA-C-102	PUBLIC DOMAIN CIVIL WORKS LEVELS PLAN - SHEET 2
DA-C-103	PUBLIC DOMAIN CIVIL WORKS SITE FRONTAGE CROSS SECTIONS - SHEET 1
DA-C-104	PUBLIC DOMAIN CIVIL WORKS SITE FRONTAGE CROSS SECTIONS - SHEET 2
DA-C-111	PUBLIC DOMAIN CIVIL WORKS DRIVEWAY No. 1 PLAN
DA-C-112	PUBLIC DOMAIN CIVIL WORKS DRIVEWAY No. 1 LONGITUDINAL SECTION A
DA-C-113	PUBLIC DOMAIN CIVIL WORKS DRIVEWAY No. 2 PLAN
DA-C-114	PUBLIC DOMAIN CIVIL WORKS DRIVEWAY No. 2 LONGITUDINAL SECTION B
DA-C-115	PUBLIC DOMAIN CIVIL WORKS DRIVEWAY No. 3 PLAN
DA-C-116	PUBLIC DOMAIN CIVIL WORKS DRIVEWAY No. 3 LONGITUDINAL SECTION C
DA-C-117	PUBLIC DOMAIN CIVIL WORKS DRIVEWAY No. 4 PLAN
DA-C-118	PUBLIC DOMAIN CIVIL WORKS DRIVEWAY No. 4 LONGITUDINAL SECTION D
DA-C-301	PUBLIC DOMAIN CIVIL WORKS DRAINAGE PLAN - SHEET 1
DA-C-302	PUBLIC DOMAIN CIVIL WORKS DRAINAGE PLAN - SHEET 2
DA-C-321	PUBLIC DOMAIN CIVIL WORKS STORMWATER LONG SECTIONS - SHEET 1
DA-C-322	PUBLIC DOMAIN CIVIL WORKS STORMWATER LONG SECTIONS - SHEET 2
DA-C-323	PUBLIC DOMAIN CIVIL WORKS STORMWATER LONG SECTIONS - SHEET 3
DA-C-324	PUBLIC DOMAIN CIVIL WORKS STORMWATER LONG SECTIONS - SHEET 4
DA-C-601	PUBLIC DOMAIN CIVIL WORKS PAVEMENT PLAN - SHEET 1
DA-C-602	PUBLIC DOMAIN CIVIL WORKS PAVEMENT PLAN - SHEET 2
DA-C-603	PUBLIC DOMAIN CIVIL WORKS DETAIL SHEET 1

IMPORTANT NOTES:
Do not scale from drawings. All dimensions shall be checked on site before commencement of work. All discrepancies shall be brought to the attention of the Architect. Larger scale drawings and written dimensions take precedence. This drawing is copyright and the property of the author, and must not be related, copied or used without the express authority of MARCHESE PARTNERS ENGINEERING PTY. LTD.

DEVELOPMENT APPLICATION

REVISION	DATE	DESCRIPTION	BY
A	2016.11.02	PRELIMINARY ISSUE FOR COORDINATION	LP
B	2016.11.16	DEVELOPMENT APPLICATION	LP
C	2016.11.17	DEVELOPMENT APPLICATION	LP
D	2017.02.03	DEVELOPMENT APPLICATION	LP

marchesepartners
engineering

Marchese Partners Engineering Pty Ltd
Level 1, 53 Walker Street, North Sydney, NSW 2060, Australia
P +61 2 9922 4375 F +61 2 9929 5786 E Info@marchesepartners.com.au
www.marchesepartners.com.au
Sydney • Brisbane • Canberra • Melbourne • Adelaide • Perth
Kuala Lumpur • Auckland
ABN 32 604 104 378

CLIENT	DPG PROJECT 7 PTY LTD	DRAWING TITLE			
		LEGEND, ABBREVIATIONS & DRAWING LIST			
PROJECT	14-38 COWPER ST, 21-41 EAST ST, 5-5A ROWELL ST GRANVILLE NSW 2142	SCALE	DATE	DRAWN	CHECKED
		NTS@A1 NTS@A3	10.11.2016	TF	LP
		JOB	DRAWING	REVISION	
		0991	DA-C-002	D	

NOTES

GENERAL

1. N/A
2. N/A
3. ALL DIMENSIONS IN MILLIMETRES UNO. REDUCED LEVELS AND CHAINAGES ARE IN METRES. DO NOT SCALE DRAWINGS. USE FIGURED DIMENSIONS.
4. THE PROPOSED WORKS DETAILED HEREIN SHALL BE CONSTRUCTED TO THE REQUIREMENTS OF COUNCIL. GENERALLY AS DETAILED HEREUNDER.
5. ALL EXISTING SERVICES SHALL BE VERIFIED FOR DEPTH AND HORIZONTAL POSITION BY PHYSICAL MEANS PRIOR TO EXCAVATION. ANY DISCREPANCIES SHALL BE BROUGHT FORTHWITH TO THE PROJECT MANAGER'S ATTENTION.

STORMWATER AND SUBSOIL DRAINAGE

MATERIALS:

1. PIPES AND FITTINGS FOR STORMWATER DRAINAGE SHALL BE AS FOLLOWS UNO ON THE DRAWINGS:

A. POLYVINYL CHLORIDE (PVC) WITH SOLVENT WELDED JOINTS FOR BELOW GROUND DRAINAGE UP TO 225mm.

B. REINFORCED CONCRETE WITH RUBBER RINGS FOR PIPE DIA'S GREATER THAN 225mm UNO.

C. REINFORCED CONCRETE WHERE REQUIRED BY AS.3500 FOR EXCESSIVE DEPTH.

D. INSTALL IN ACCORDANCE WITH AUSTRALIAN STANDARD AS.3500 EXCEPT WHERE VARIED BY THE CONTRACT DOCUMENTS.
2. PIPES & FITTINGS FOR SUBSOIL DRAINAGE SHALL BE SLOTTED POLYVINYL CHLORIDE (PVC) WITH SOLVENT WELDED JOINTS, MIN. 150mm DIAMETER.
3. IN GROUND DRAINAGE PIPEWORK SERVING DP's SHALL BE MINIMUM 150mm DIA. UNO.
4. GRATED DRAINS SHALL BE 150mm NOM.

A. 150mm NOM. WIDTH IN NON TRAFFICABLE AREAS.

B. 225mm NOM. WIDTH IN TRAFFICABLE AREAS.
5. STORMWATER PITS ARE AS SHOWN & SPECIFIED ON THE PLANS. PRECAST TYPE ACCEPTABLE WITH STEP IRONS FOR DEPTH GREATER THAN 1000. BENCH ALL PITS MIN. 50mm & FORM SMOOTH TRANSITION FROM INLET TO OUTLET.
6. SELECT FILL SHALL BE MATERIAL OBTAINED FROM EXCAVATION OF THE PIPE TRENCH OR IMPORTED WITH A PARTICLE SIZE FOR ROCK NOT GREATER THAN 75mm OR FOR OTHER THAN ROCK NOT GREATER THAN 150mm.
7. IMPORTED FILL SHALL BE EITHER, AND GENERALLY CONSIST OF SINGLE SIZED AGGREGATE WITH PARTICLE SIZE NOT GREATER THAN 5mm WRAPPED ALL ROUND WITH GEOTEXTILE FILTER FABRIC OR APPROVED HIGH COMPACTION SAND OR APPROVED CRUSHED ROAD GRAVEL CONFORMING TO RTA FORM 3051 OR SIMILAR.
8. STORMWATER PITS AND GRATES TO CONFORM WITH STANDARD COUNCIL REQUIREMENTS, WHERE ON PUBLIC LAND. GRATES TO BE SUPPLIED IN CLASS SHOWN ON THE DRAWINGS.

INSTALLATION REQUIREMENTS:

9. PIPES SHALL BE TRUE TO GRADES SHOWN AND ALIGNED SO THAT THE CENTRES OF THE INLET PIPES INTERSECT WITH THE CENTRE OF THE OUTLET PIPE AT THE DOWNSTREAM FACE OF THE PIT.
10. MINIMUM GRADES FOR GRAVITY STORMWATER DRAINAGE SHALL CONFORM TO AS3500 PART3 AS FOLLOWS, UNO:

1% FOR 100 AND 150 mm DIA.

0.5% FOR 225 mm DIA

0.4% FOR 300 mm DIA

0.35% FOR 375 mm DIA
11. MINIMUM DEPTH OF COVER SHALL BE :-

- 300mm IN PRIVATE PROPERTY (NON VEHICULAR TRAFFIC).

- 450mm IN PUBLIC AREAS.

- 600mm IN VEHICULAR TRAFFICABLE AREAS. (FOOTWAY/ROADWAY).
12. BED ALL PIPES FIRMLY AND EVENLY ONTO IMPORTED BEDDING FILL MATERIAL.
13. LAY AND JOINT ALL PIPES IN ACCORDANCE WITH THE MANUFACTURERS RECOMMENDATIONS AND:

AS 3725-1989 LOADS ON BURIED CONCRETE PIPES

AS 2566-1998 BURIED FLEXIBLE PIPELINES

AS 1597.2-1996 PRECAST REINFORCED CONCRETE BOX CULVERTS.

AS 3500-1990 NATIONAL PLUMBING & DRAINAGE CODE.

PART 2, SANITARY PLUMBING AND SANITARY DRAINAGE.

SYDNEY WATER REQUIREMENTS.
14. ALLOW TO TEST ALL PIPES AND PITS TO MANUFACTURERS REQUIREMENTS.

CONCRETE WORKS

1. ALL WORKMANSHIP AND MATERIALS SHALL BE IN ACCORDANCE WITH AS3600, THE STANDARDS ASSOCIATION AUSTRALIA, STANDARDS CITED IN AS3600, THE DRAWINGS AND THE SPECIFICATION
2. ALL CONCRETE SHALL BE 80mm NOMINAL SLUMP, 20mm MAXIMUM AGGREGATE WITH NO ADMIXTURES OR FLY ASH, UNLESS OTHERWISE APPROVED.

ALL CONCRETE WORK IN CONTACT WITH SEWER TO HAVE TYPE SL PORTLAND CEMENT, OTHERWISE TYPE A CEMENT.

FOR BRIDGE WORKS, A MAXIMUM 56 DAYS SHRINKAGE OF 600 MICROSTRAIN, A MINIMUM CEMENT CONTENT 350kg/m3 AND MAXIMUM WATER-CEMENT RATIO OF 0.40
3. STRENGTH GRADE OF CONCRETE SHALL BE:

25 MPa (KERBS, EDGE STRIPS & CONCRETE ENCASEMENT) AND 32 MPa ELSEWHERE.
4. CONSTRUCTION JOINTS SHALL BE PROPERLY FORMED AND USED ONLY WHERE SHOWN OR APPROVED. GENERALLY FOR HAND PLACED KERB & GUTTER 6mm THICK APPROVED BITUMINOUS MASTIC JOINTING MATERIAL SHALL BE PROVIDED AT INTERVALS NOT EXCEEDING 6m. FOR MACHINE PLACED KERB & GUTTER 6mm THICK APPROVED BITUMINOUS MASTIC JOINTING MATERIAL SHALL BE PROVIDED AT INTERVALS NOT EXCEEDING 12m & GULLIOTINED DUMMY GROOVED JOINTS, 25mm IN DEPTH, SHALL BE FORMED EVERY 3m OF GUTTER. JOINTS ARE ALSO REQUIRED AT EACH END OF GUTTER CROSSING AND GULLY PITS. JOINTS SHALL BE SET VERTICAL AND SQUARE TO THE KERB.
5. REINFORCEMENT IS REPRESENTED DIAGRAMMATICALLY AND IS NOT NECESSARILY SHOWN IN TRUE PROJECTION.
6. WELDING OR SPLICES IN REINFORCEMENT SHALL BE USED ONLY IN POSITIONS APPROVED BY THE ENGINEER.
7. CONCRETE CURING SHALL BE IN ACCORDANCE WITH AS3600. CURING SHALL BE COMMENCED WITHIN TWO HOURS OF FINISHING OPERATIONS AND SHALL BE CONTINUED FOR A MINIMUM OF SEVEN DAYS BY AN APPROVED PROPRIETARY COMPOUND OR BY KEEPING CONTINUOUSLY WET.
8. FORMWORK SHALL BE DESIGNED AND CONSTRUCTED IN ACCORDANCE WITH AS3610. FORMWORK SHALL NOT BE STRIPPED NOR PROPS REMOVED WITHOUT APPROVAL.
9. FABRIC LAP DETAILS SHALL BE IN ACCORDANCE WITH FIG.13.2.4 OFAS3600.
10. HOOKS, LAPS AND BENDS SHALL BE IN ACCORDANCE WITH AS3600 UNO.
11. ALL CHEMICAL ANCHORS SHALL BE EITHER 'CHEMSET' BY 'RAMSET' WITH THE GLASS CAPSULE SYSTEM INSTALLED IN STRICT ACCORDANCE WITH MANUFACTURERS INSTRUCTIONS OR HILTI HVU ADHESIVE ANCHOR WITH FOIL CAPSULE SYSTEM INSTALLED IN STRICT ACCORDANCE WITH MANUFACTURERS INSTRUCTION. ALL CHEMICAL ANCHORS SHALL BE HOT DIPPED GALVANIZED AND BE MIN M16 DIA. U.N.O.

GENERAL EARTHWORKS, SITEWORKS & FILLING:

FILLING:

1. THESE CLAUSES SHALL BE READ IN CONJUNCTION WITH 'REPORT ON GEOTECHNICAL INVESTIGATION BY REPORT No. _____
PH 9 _____ FAX: 9 _____
2. THE RECOMMENDATIONS CONTAINED IN THE GEOTECH REPORT SHALL OVERRIDE THE CLAUSES PRESENTED HEREIN.
3. STRIP ALL TOPSOIL AND UNDERLYING FILL AND STOCKPILE TOPSOIL FOR LATER REUSE FOR LANDSCAPING PURPOSES.
4. NEW FILL REQUIRED TO REINSTATE CUT LEVELS TO PROPOSED BENCHING LEVELS SHALL BE SOURCED FROM OTHER PARTS OF THE EXCAVATION AS SELECT FILL OR IMPORTED FILL AS SPECIFIED BELOW IN NOTES 5 AND 6.
5. SELECT FILL SHALL CONSIST OF LOCALLY DERIVED OR CUT NATURAL CLAYS.
6. IMPORTED FILL SHALL CONSIST OF RIPPED SANDSTONE OR SHALE OR SIMILAR MATERIAL WITH MAXIMUM PARTICLE SIZE NOT GREATER THAN 120mm AND A MOISTURE CONTENT WITHIN 2-3% OF STANDARD OPTIMUM.
7. ALL FILL (COHESIVE SOIL) SHALL BE PLACED IN LAYERS OF 200mm MAXIMUM THICKNESS, COMPACTED BY MACHINE ROLLING TO ACHIEVE A DRY DENSITY RATIO OF NOT LESS THAN 98% STANDARD MAXIMUM AT A CORRESPONDING MOISTURE CONTENT WITHIN 2-3% OF STANDARD OPTIMUM.
8. IN AREAS WHERE HIGH IMPACT ROLLING IS USED TEST EACH FINAL LAYER OF NOT GREATER THAN 300mm TO 400mm TO ACHIEVE A DRY DENSITY RATIO OF NOT LESS THAN 98% STANDARD MAXIMUM AT A CORRESPONDING MOISTURE CONTENT WITHIN 2-3% OF STANDARD OPTIMUM.

EXCAVATION BATTERS:

9. ALL TEMPORARY BATTERS CUT IN CLAY SUBSTRATE SHALL BE 1 HORIZ : 1 VERT.
ALL LONG TERM EXPOSED BATTERS CUT IN CLAY SUBSTRATE SHALL BE 2 HORIZ : 1 VERT.
ALL DETENTION BASIN BATTERS IN CLAY SUBSTRATE SHALL BE 3 HORIZ : 1 VERT.
ALL DETENTION BASIN BATTERS IN ROCK SUBSTRATE SHALL BE NEAR VERTICAL.
10. GEOTECHNICAL TESTING IS TO BE UNDERTAKEN TO AT LEAST LEVEL 1 CONTROL OF FILL COMPACTION STANDARD, AS DEFINED IN AS. 3738 AS FOLLOWS:

FOR GENERAL FILL OR CUT AREAS OVER THE AREA PROVIDE ONE (1) TEST PER 200mm LAYER, OVER AN AREA NOT GREATER THAN 500 m².

FOR GENERAL FILL AREAS IN CONCENTRATED AREAS ADJACENT TO AND BEHIND THE STRUCTURE AND ADJACENT TO AND BEHIND RETAINING WALLS PROVIDE ONE (1) TEST PER 200mm LAYER, OVER AN AREA NOT GREATER THAN 50m².
11. SUBMIT ALL GEOTECHNICAL TEST RESULTS TO LP CONSULTING AUSTRALIA FOR REVIEW PRIOR TO CONTINUATION WITH SUBSEQUENT SECTION OF WORK.

EARTHWORKS FOR SERVICES

1. EXCAVATE TRENCHES AND STOCKPILE ALL MATERIAL FOR INSPECTION WITH REGARD TO RE-USE FOR TRENCH BACKFILL. REMAINING MATERIAL TO BE REMOVED FROM SITE.
2. BEDDING MATERIAL SHALL CONSIST OF IMPORTED FILL ONLY. THICKNESS OF BEDDING LAYER SHALL BE 75mm IN O.T.R. AND 200mm IN ROCK.
3. EMBED ALL PIPES WITH IMPORTED FILL. PROVIDE 200mm SIDE SUPPORT AND 150mm OVERLAY ABOVE PIPE CROWN.
4. TRENCH FILL ABOVE THE EMBEDMENT ZONE TO THE UNDERSIDE OF THE ROAD PAVEMENT OR FOOTWAY FILL. MATERIAL SHALL BE AS FOLLOWS :

UNDER ROADWAY:

TRENCH FILL MATERIAL SHALL CONSIST OF IMPORTED FILL AS SPECIFIED HEREIN OF EITHER HIGH GRADE COMPACTION SAND OR APPROVED CRUSHED ROAD GRAVEL CONFORMING TO RTA FORM 3051 OR SIMILAR.

OTHER THAN ROADWAY:

TRENCH FILL MATERIAL EXCAVATED SHALL CONSIST OF SELECT FILL AS SPECIFIED HEREIN AND SHALL NOT CONTAIN MORE THAN 20% OF STONES OF SIZE BETWEEN 75mm & 150mm AND NONE LARGER THAN 150mm. PRIOR TO THE USE OF THE EXCAVATED MATERIAL IT SHALL BE INSPECTED AND APPROVED BY THE CONSULTANT.

5. COMPACT BEDDING, EMBEDMENT AND TRENCH FILL MATERIALS AS FOLLOWS:

EMBEDMENT:-

FOR GRANULAR FILL MATERIAL (NON-COHESIVE SOILS) EG. COARSE AGGREGATE FILL, HIGH GRADE COMPACTION SAND, THE DENSITY INDEX (ID) SHALL BE NOT LESS THAN 70%.

TRENCH FILL:-

FOR GRANULAR MATERIAL (NON-COHESIVE SOILS), THE DENSITY INDEX (ID) SHALL BE NOT LESS THAN 70%.

FOR NON-GRANULAR FILL MATERIAL (COHESIVE SOILS), THE DRY DENSITY RATIO (RD) SHALL BE NOT LESS THAN 95%.

6. MEASURE OF COMPACTION:-

THE DEGREE OF COMPACTION SHALL BE MEASURED BY ONE OF THE FOLLOWING PARAMETERS :-

GRANULAR FILL (NON-COHESIVE SOILS). THE DENSITY INDEX (ID) DETERMINED IN ACCORDANCE WITH AS 1289.E8.1 BASED ON THE MAXIMUM AND MINIMUM DRY DENSITIES IN ACCORDANCE WITH AS 1289.E5.2 AND THE FIELD DRY DENSITY IN ACCORDANCE WITH AS 1289.E3.2 OR AS 1289.E8.1.

NON-GRANULAR FILL (COHESIVE SOILS). THE DRY DENSITY RATION (RD) DETERMINED IN ACCORDANCE WITH AS 1289.E4.1 BASED ON THE FIELD DRY DENSITY IN ACCORDANCE WITH AS 1289.E3.2 AND THE MAXIMUM DRY DENSITY IN ACCORDANCE WITH AS 1289.E.1.

7. GEOTECHNICAL TESTING IS TO BE UNDERTAKEN TO AT LEAST LEVEL 1 CONTROL OF FILL COMPACTION STANDARD, AS DEFINED IN AS. 3738 AS FOLLOWS:

TEST EACH 300mm LAYER ABOVE PIPE CROWN.

TEST BASE & SUB-BASE LAYERS WHERE APPLICABLE.

TESTS SHALL BE REQUIRED AT EACH 50m CENTRES WHERE THE LENGTH OF TRENCH IS WITHIN THE 50m REQUIREMENT.

8. SUBMIT ALL GEOTECHNICAL TEST RESULTS TO LP CONSULTING AUSTRALIA FOR REVIEW PRIOR TO CONTINUATION WITH SUBSEQUENT SECTION OF WORK.

RESTORATION

1. RESTORE ALL TRAFFIC AREAS TO PRE EXISTING CONDITION.
2. FOR ALL SURFACES OTHER THAN IN TRAFFIC AREAS RESTORE DISTURBED SURFACES TO PRE-EXISTING CONDITIONS AND COMPACT AS SPECIFIED.
3. RESTORE ALL AUTHORITY OWNED AREAS TO COUNCIL STANDARDS.

APPROVALS

1. THE AS CONSTRUCTED WORKS SHALL BE INSPECTED BY DESIGN CONSULTANT. MINIMUM 48 HOURS NOTICE SHALL APPLY TO ALL INSPECTIONS.
2. THE DESIGN PLANS HEREIN ARE SUBJECT TO COUNCIL APPROVAL PRIOR TO CONSTRUCTION. OBTAIN EXPRESS (WRITTEN) ADVICE TO PROCEED FROM PROJECT MANAGER PRIOR TO COMMENCEMENT.
3. SUBMIT WORK-AS-EXECUTED DRAWINGS IN CIVILCAD OR DXF DIGITAL FORMAT AND HARD COPY FORMAT. VERIFY ALL CONSTRUCTION WORKS SHOWN HEREON.
4. CERTIFY THAT THE AS CONSTRUCTED SYSTEM HAS BEEN BUILT IN ACCORDANCE WITH THE APPROVED PLANS ISSUED FOR CONSTRUCTION.

SERVICES UNDER ROAD SURFACES

1. ALL OTHER SERVICES INCLUDING BUT NOT LIMITED TO WATER, HYDRANT, GAS, SEWER, ELECTRICAL AND COMMUNICATIONS CONDUITS OR CABLES SHALL BE LAID WITH MINIMUM 600mm U.N.O. COVER BELOW PROPOSED ROAD SURFACE OR APPROVED OTHER MEANS TO PROTECT DURING CONSTRUCTION.

HYDRAULIC SERVICES

1. ALL WORKS CARRIED OUT SHALL COMPLY WITH AS-3500, SYDNEY WATER & COUNCIL REQUIREMENTS. OBTAIN NECESSARY AUTHORITIES APPROVALS PRIOR TO COMMENCING WORKS.
2. PRIOR TO COMMENCING WORKS SURVEY & INSPECT SITE & CONFIRM LOCATION & LEVELS OF ALL HYDRAULIC SERVICES PIPEWORK.
NO CLAIMS FOR ADDITIONAL COSTS RESULTING FROM THE LACK OF KNOWLEDGE OF SITE CONDITIONS RELATING TO WORKS TO BE DONE OR LOCATIONS AND LEVELS OF EXISTING AND NEW SERVICES WILL BE ACCEPTED.
3. PRIOR TO CAPPING OFF & REMOVAL OF REDUNDANT SERVICES CONFIRM ON SITE THAT SERVICE IS NOT SUPPLYING EXISTING BUILDINGS OR AMENITIES.
4. COLD WATER PIPEWORK SHALL CONSIST OF COPPER TUBE & FITTINGS IN ACCORDANCE WITH AS 1432 TYPE B. PIPES AND FITTINGS SHALL BE JOINTED WITH 15% SILVER SOLDER.
5. ALL NEW UNDERGROUND METAL PIPEWORK SHALL BE INSTALLED WITH POLYETHYLENE SLEEVING OBTAINED FROM 'TYCOO WATER AUST' AND INSTALLED TO MANUFACTURE'S REQUIREMENTS.
6. LANDSCAPE IRRIGATION WATER PIPEWORK SHALL CONSIST OF MEDIUM DENSITY POLYETHYLENE PIPE CLASS PN16 WITH ELECTRO FUSION JOINTS OR EQUAL TO EXISTING PIPEWORK.

IMPORTANT NOTES:
Do not scale from drawings. All dimensions shall be checked on site before commencement of work. All discrepancies shall be brought to the attention of the Architect. Larger scale drawings and written dimensions take precedence. This drawing is copyright and the property of the author, and must not be retained, copied or used without the express authority of MARCHESE PARTNERS ENGINEERING PTY. LTD.

DEVELOPMENT APPLICATION

REVISION	DATE	DESCRIPTION	BY
A	2016.11.02	PRELIMINARY ISSUE FOR COORDINATION	LP
B	2016.11.16	DEVELOPMENT APPLICATION	LP
C	2016.11.17	DEVELOPMENT APPLICATION	LP
D	2017.02.03	DEVELOPMENT APPLICATION	LP

marchesepartners

engineering

Marchese Partners Engineering Pty Ltd
Level 1, 53 Walker Street, North Sydney, NSW 2060, Australia
P +61 2 9922 4375 F +61 2 9929 5786 E info@marchesepartners.com.au
www.marchesepartners.com.au
Sydney • Brisbane • Canberra • Melbourne • Adelaide • Perth
Kuala Lumpur • Auckland
ABN 32 604 104 378

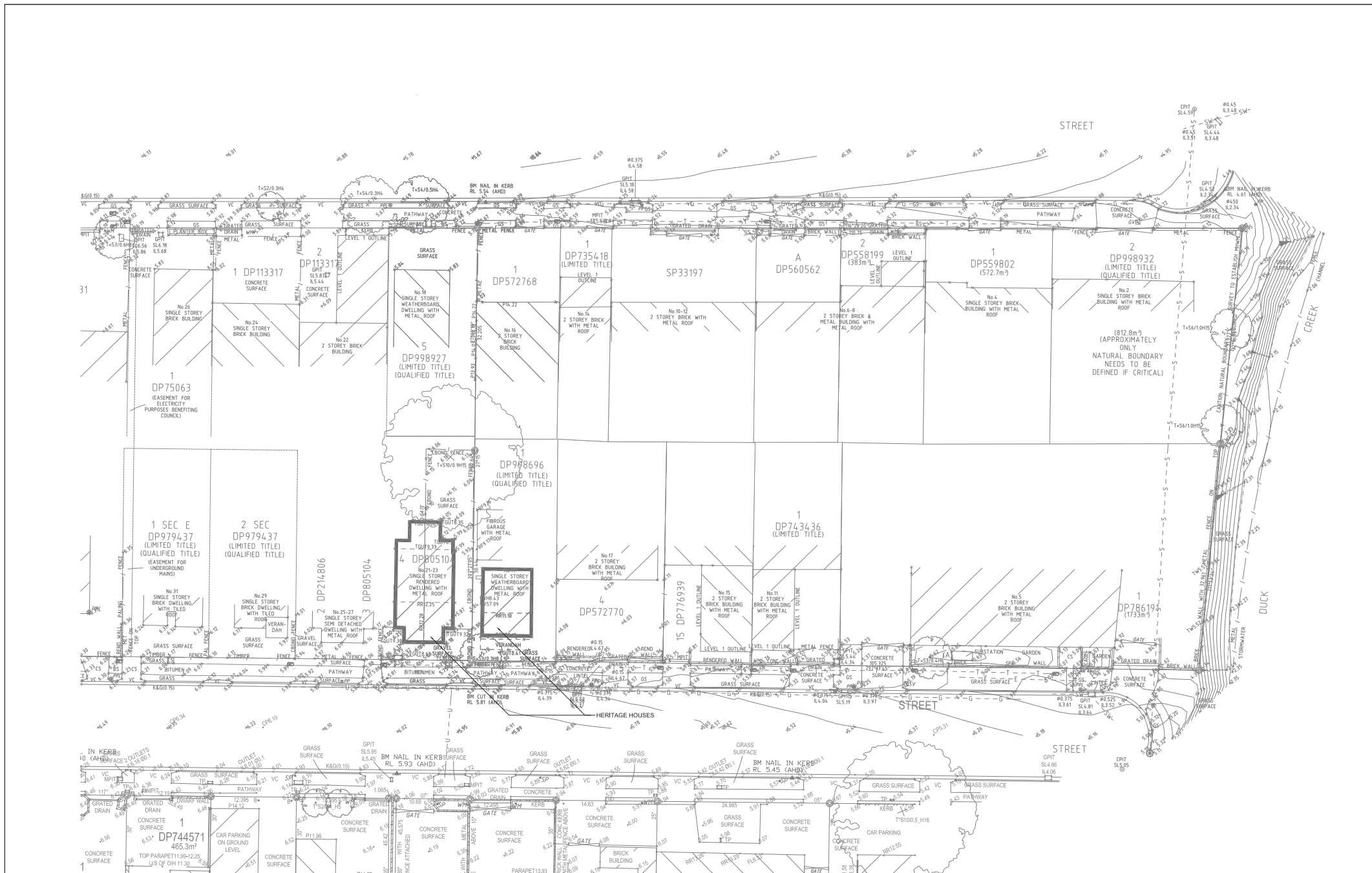
CLIENT

DPG PROJECT 7 PTY LTD

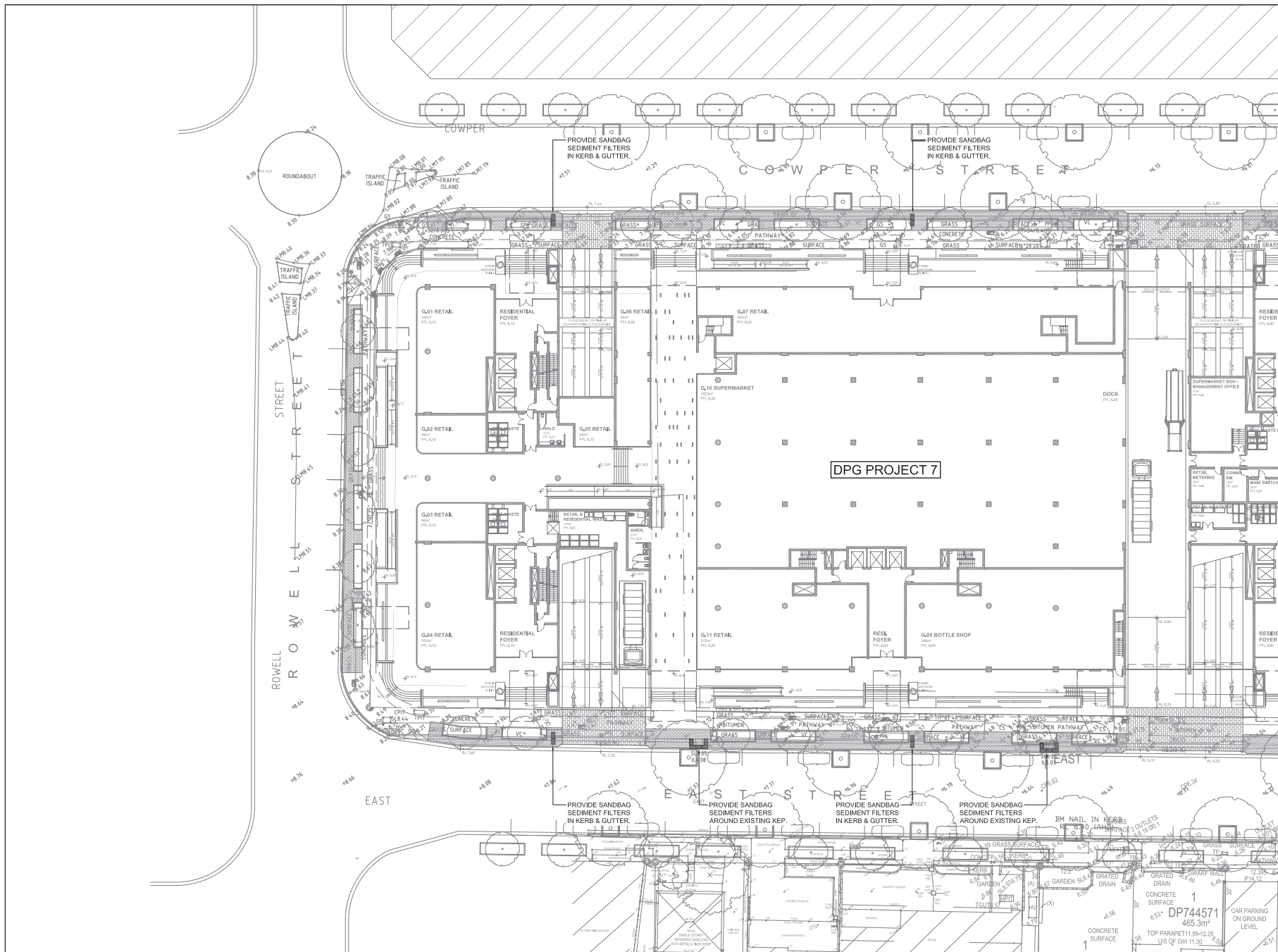
PROJECT

14-38 COWPER ST, 21-41 EAST ST,
5-5A ROWELL ST GRANVILLE NSW 2142

CLIENT DPG PROJECT 7 PTY LTD		DRAWING TITLE GENERAL NOTES			
PROJECT 14-38 COWPER ST, 21-41 EAST ST, 5-5A ROWELL ST GRANVILLE NSW 2142		SCALE NTS@A1 NTS@A3	DATE 10.11.2016	DRAWN TF	CHECKED LP
		JOB 0991	DRAWING DA-C-003		REVISION D

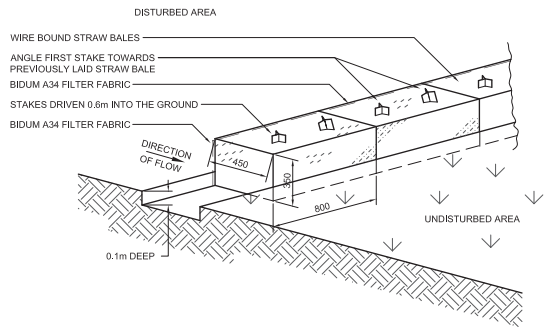


<p>IMPORTANT NOTES:</p> <p>Do not scale from drawings. All dimensions shall be checked on site before commencement of work. All discrepancies shall be brought to the attention of the Architect. Larger scale drawings and written dimensions take precedence. This drawing is copyright and the property of the author, and must not be retained, copied or used without the express authority of MARCHESE PARTNERS ENGINEERING PTY. LTD.</p> <p>DEVELOPMENT APPLICATION</p>	REVISION	DATE	DESCRIPTION	BY						
	A	2016.11.17	PRELIMINARY ISSUE FOR COORDINATION	LP						
	B	2016.11.16	DEVELOPMENT APPLICATION	LP						
	C	2016.11.17	DEVELOPMENT APPLICATION	LP						
	D	2017.02.03	DEVELOPMENT APPLICATION	LP						
<p>marchesepartners engineering</p> <p>Marchese Partners Engineering Pty Ltd Level 1, 53 Walker Street, North Sydney, NSW 2060, Australia P +61 2 9922 4375 F +61 2 9929 5786 E info@marchesepartners.com.au www.marchesepartners.com.au Sydney • Brisbane • Canberra • Melbourne • Adelaide • Perth Kuala Lumpur • Auckland ABN 32 604 104 378</p>							CLIENT DPG PROJECT 7 PTY LTD		DRAWING TITLE SURVEY PLAN - SHEET 2	
PROJECT 14-38 COWPER ST, 21-41 EAST ST, 5-5A ROWELL ST GRANVILLE NSW 2142						SCALE 1:250@A1 1:500@A3	DATE 10.11.2016	DRAWN TF	CHECKED LP	
						JOB 0991	DRAWING DA-C-005	REVISION D		

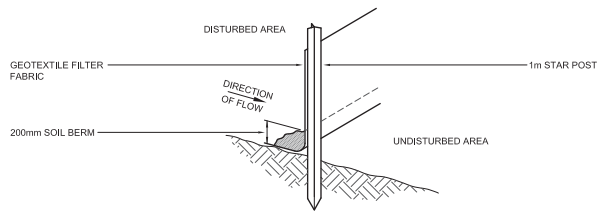


FOR CONTINUATION REFER TO C-007

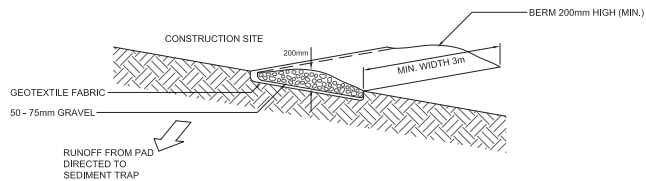
<div>IMPORTANT NOTES: Do not scale from drawings. All dimensions shall be checked on site before commencement of work. All discrepancies shall be brought to the attention of the Architect. Larger scale drawings and written dimensions take precedence. This drawing is copyright and the property of the author, and must not be retained, copied or used without the express authority of MARCHESSE PARTNERS ENGINEERING PTY. LTD.</div> <div>DEVELOPMENT APPLICATION</div>	REVISION	DATE	DESCRIPTION	BY	<div><div><div>marchesepartners</div><div>engineering</div></div><div>Marchesse Partners Engineering Pty Ltd Level 1, 53 Walker Street, North Sydney, NSW 2060, Australia P +61 2 9922 4375 F +61 2 9929 5786 E info@marchesepartners.com.au www.marchesepartners.com.au Sydney • Brisbane • Canberra • Melbourne • Adelaide • Perth Kuala Lumpur • Auckland ABN 32 604 104 378</div></div>	<div><div><div>1250</div><div>1:250</div></div><div><div>0 1 2 3 4 5 10</div><div>1:250</div></div></div>	CLIENT	DPG PROJECT 7 PTY LTD			DRAWING TITLE								
								EROSION AND SEDIMENT CONTROL											
								PLAN - SHEET 1											
								PROJECT	14-38 COWPER ST, 21-41 EAST ST, 5-5A ROWELL ST GRANVILLE NSW 2142	SCALE	1:250@A1 1:500@A3	DATE	10.11.2016	DRAWN	TF	CHECKED	LP		
								JOB	0991	DRAWING	DA-C-006				REVISION	D			



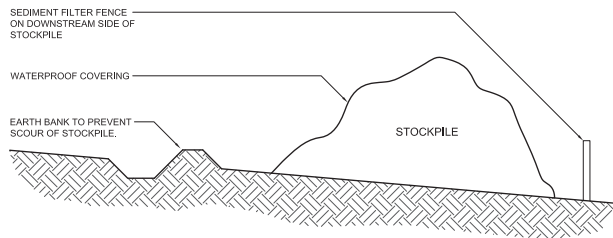
STRAW BALE SEDIMENT FILTER
N.T.S



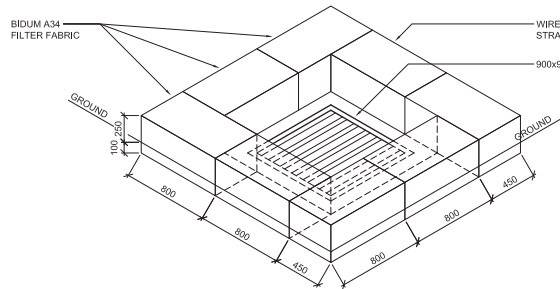
SEDIMENT FILTER FENCE
N.T.S



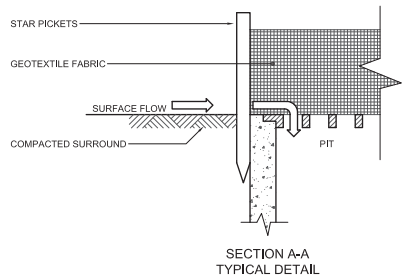
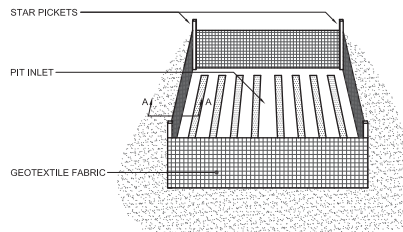
VEHICLE ACCESS TO SITE
N.T.S



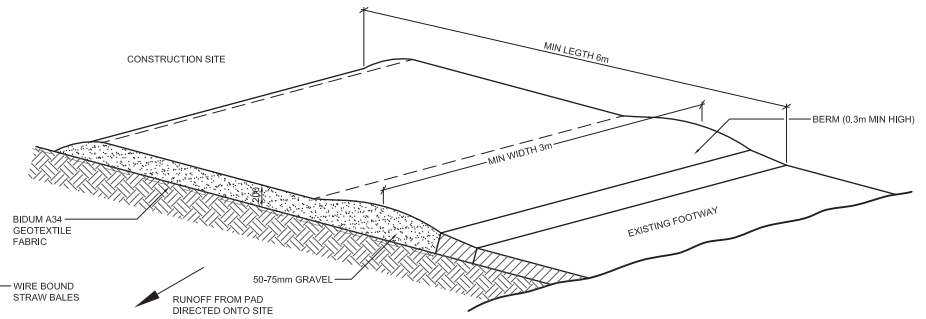
BUILDING MATERIALS STOCKPILE
N.T.S



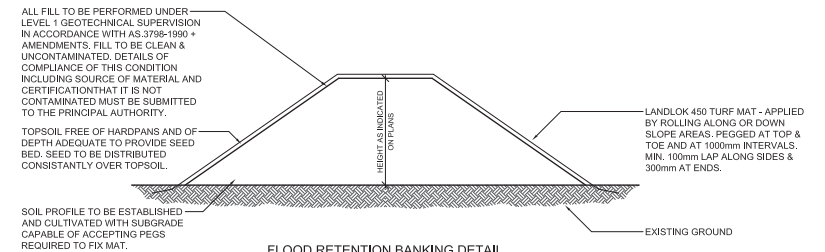
SWP WITH STRAW BALE
SEDIMENT FILTER
N.T.S



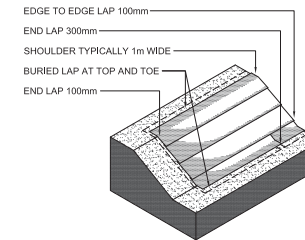
GEOTEXTILE FILTER FABRIC DROP
INLET SEDIMENT TRAP
N.T.S



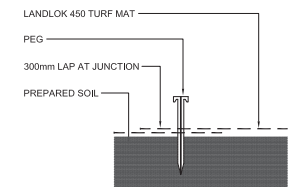
TEMPORARY CONSTRUCTION EXIT
N.T.S



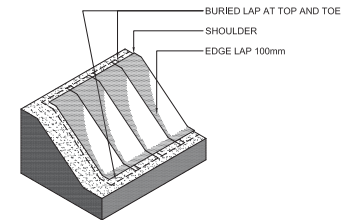
FLOOD RETENTION BANKING
DETAIL + ANTI-SOUR TREATMENT



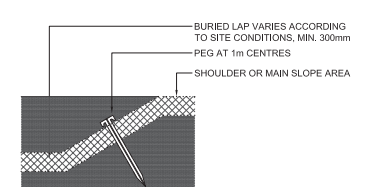
TREATMENT OF SLOPES UP TO
35° FROM THE HORIZONTAL



TYPICAL CROSS SECTION
THROUGH INSTALLED LANDLOK 450



TREATMENT OF SLOPES GREATER
THAN 35° FROM THE HORIZONTAL



TYPICAL CROSS SECTION
SHOWING EDGE TREATMENT

FLOOD RETENTION BANKING
N.T.S

IMPORTANT NOTES:
Do not scale from drawings. All dimensions shall be checked on site before commencement of work. All discrepancies shall be brought to the attention of the Architect. Larger scale drawings and written dimensions take precedence. This drawing is copyright and the property of the author, and must not be retained, copied or used without the express authority of MARCHESE PARTNERS ENGINEERING PTY. LTD.

DEVELOPMENT
APPLICATION

REVISION	DATE	DESCRIPTION	BY
A	2016.11.17	PRELIMINARY ISSUE FOR COORDINATION	LP
B	2016.11.18	DEVELOPMENT APPLICATION	LP
C	2016.11.17	DEVELOPMENT APPLICATION	LP
D	2017.02.03	DEVELOPMENT APPLICATION	LP

marchesepartners
engineering

Marchese Partners Engineering Pty Ltd
Level 1, 53 Walker Street, North Sydney, NSW 2060, Australia
P +61 2 9922 4375 F +61 2 9929 5786 E Info@marchesepartners.com.au
www.marchesepartners.com.au
Sydney • Brisbane • Canberra • Melbourne • Adelaide • Perth
Kuala Lumpur • Auckland
ABN 32 604 104 378

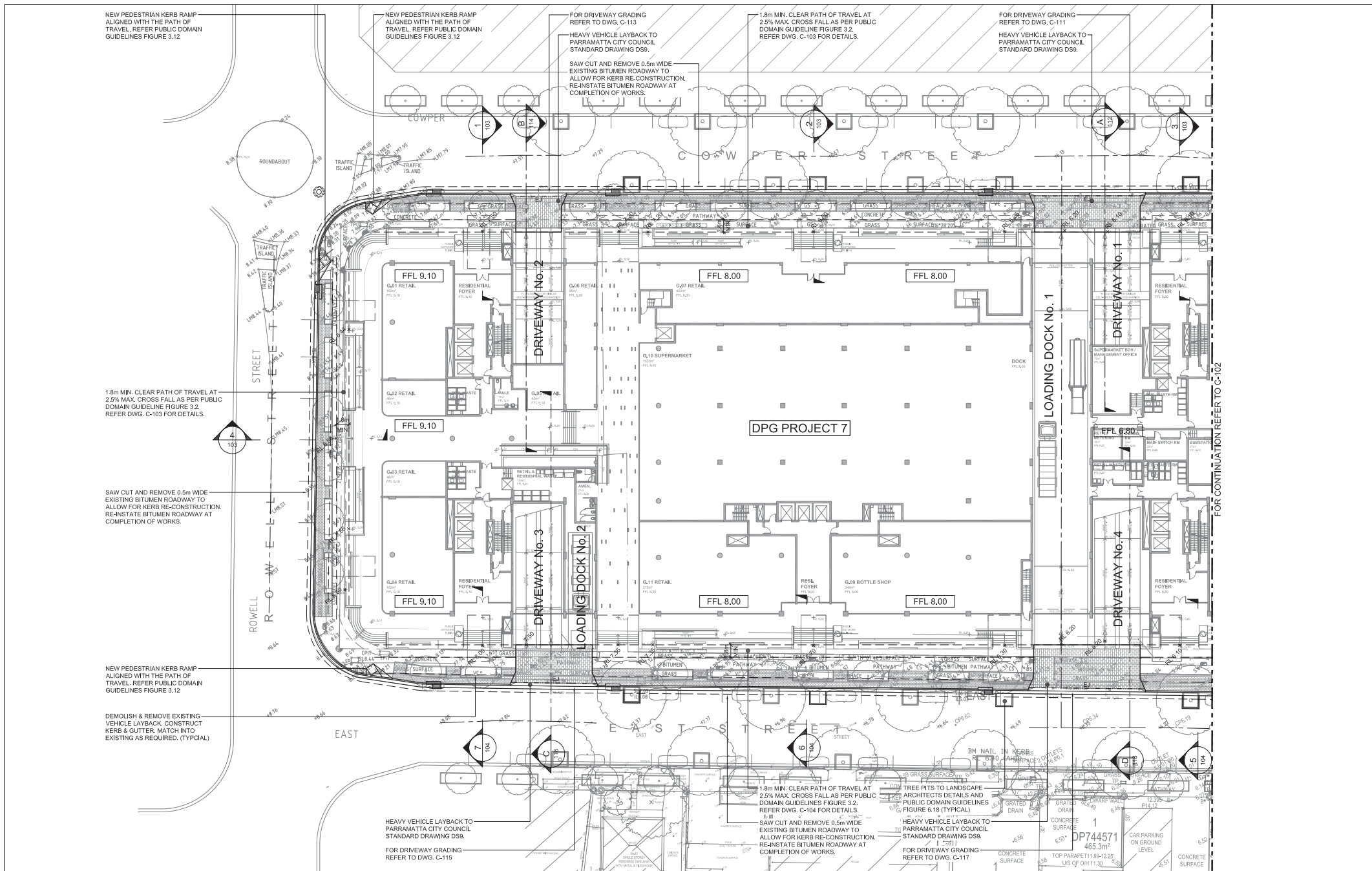
0 1 2 3 4 5 10
1:250

CLIENT
DPG PROJECT 7 PTY LTD

PROJECT
14-38 COWPER ST, 21-41 EAST ST,
5-5A ROWELL ST GRANVILLE NSW 2142

DRAWING TITLE
EROSION AND SEDIMENT CONTROL
DETAILS

SCALE	DATE	DRAWN	CHECKED
NTS@A1 NTS@A3	10.11.2016	TF	LP
JOB	DRAWING	REVISION	
0991	DA-C-008		D



IMPORTANT NOTES:

Do not scale from drawings. All dimensions shall be checked on site before commencement of work. All discrepancies shall be brought to the attention of the Architect. Larger scale drawings and written dimensions take precedence. This drawing is copyright and the property of the author, and must not be retained, copied or used without the express authority of MARCHESE PARTNERS ENGINEERING PTY. LTD.

REVISION	DATE	DESCRIPTION	BY
A	2016.11.02	PRELIMINARY ISSUE FOR COORDINATION	LP
B	2016.11.16	DEVELOPMENT APPLICATION	LP
C	2016.11.17	DEVELOPMENT APPLICATION	LP
D	2017.02.03	DEVELOPMENT APPLICATION	LP

DEVELOPMENT APPLICATION

marchesepartners
engineering

Marchese Partners Engineering Pty Ltd
Level 1, 53 Walker Street, North Sydney, NSW 2060, Australia
P +61 2 9922 4375 F +61 2 9929 5786 E info@marchesepartners.com.au
www.marchesepartners.com.au
Sydney • Brisbane • Canberra • Melbourne • Adelaide • Perth
Kuala Lumpur • Auckland
ABN 32 604 104 378

CLIENT
DPG PROJECT 7 PTY LTD

PROJECT
**14-38 COWPER ST, 21-41 EAST ST,
5-5A ROWELL ST GRANVILLE NSW 2142**

DRAWING TITLE
**PUBLIC DOMAIN CIVIL WORKS
LEVELS PLAN - SHEET 1**

SCALE
1:250@A1
1:500@A3

DATE
10.11.2016

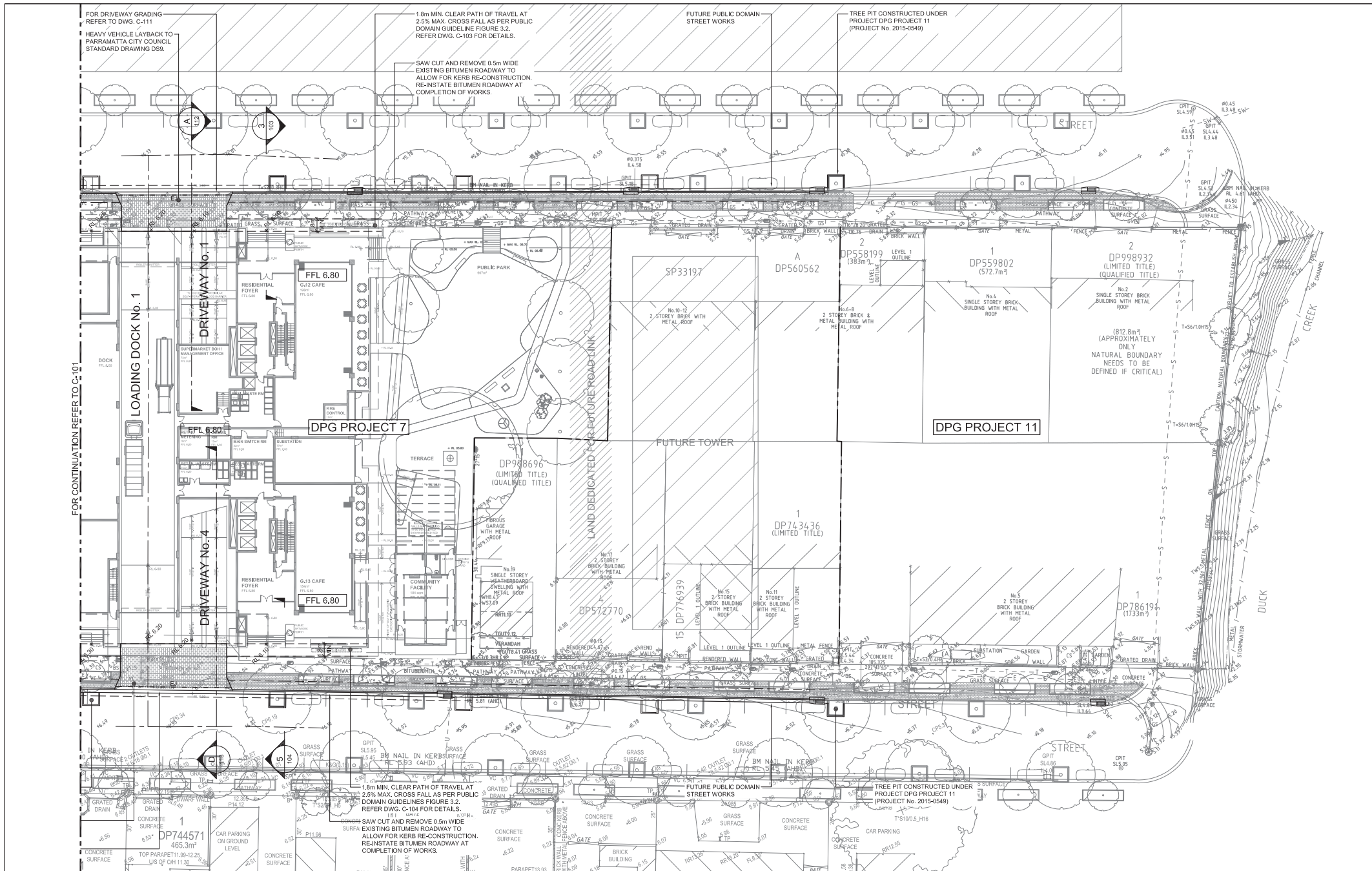
DRAWN
TF

CHECKED
LP

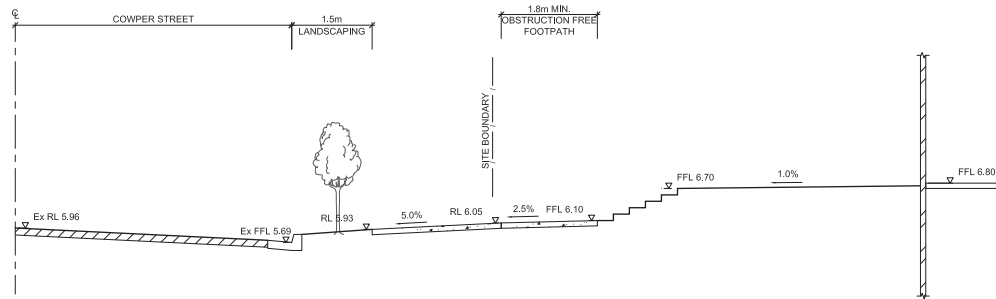
JOB
0991

DRAWING
DA-C-101

REVISION
D



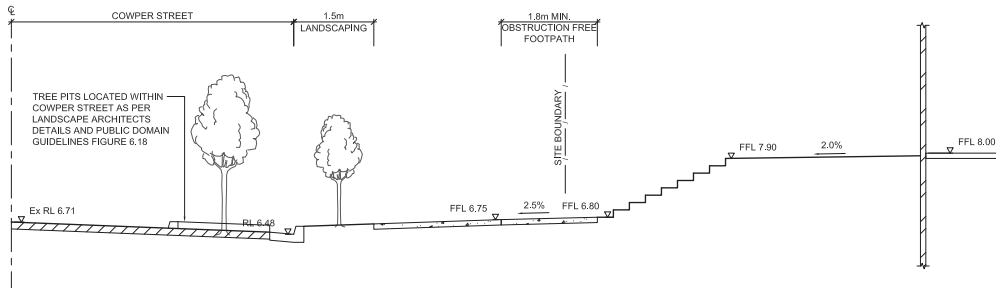
<p>IMPORTANT NOTES:</p> <p>Do not scale from drawings. All dimensions shall be checked on site before commencement of work. All discrepancies shall be brought to the attention of the Architect. Larger scale drawings and written dimensions take precedence. This drawing is copyright and the property of the author, and must not be related, copied or used without the express authority of MARCHESE PARTNERS ENGINEERING PTY. LTD.</p> <p>DEVELOPMENT APPLICATION</p>	<table> <tr> <th>REVISION</th><th>DATE</th><th>DESCRIPTION</th><th>BY</th></tr> <tr> <td>A</td><td>2016.11.17</td><td>PRELIMINARY ISSUE FOR COORDINATION</td><td>LP</td></tr> <tr> <td>B</td><td>2016.11.18</td><td>DEVELOPMENT APPLICATION</td><td>LP</td></tr> <tr> <td>C</td><td>2016.11.17</td><td>DEVELOPMENT APPLICATION</td><td>LP</td></tr> <tr> <td>D</td><td>2017.02.03</td><td>DEVELOPMENT APPLICATION</td><td>LP</td></tr> </table>	REVISION	DATE	DESCRIPTION	BY	A	2016.11.17	PRELIMINARY ISSUE FOR COORDINATION	LP	B	2016.11.18	DEVELOPMENT APPLICATION	LP	C	2016.11.17	DEVELOPMENT APPLICATION	LP	D	2017.02.03	DEVELOPMENT APPLICATION	LP	<p>marchesepartners engineering</p> <p>Marchese Partners Engineering Pty Ltd Level 1, 53 Walker Street, North Sydney, NSW 2060, Australia P +61 2 9922 4375 F +61 2 9929 5786 E info@marchesepartners.com.au www.marchesepartners.com.au Sydney • Brisbane • Canberra • Melbourne • Adelaide • Perth Kuala Lumpur • Auckland ABN 32 604 104 378</p>	<p>CLIENT DPG PROJECT 7 PTY LTD</p> <p>PROJECT 14-38 COWPER ST, 21-41 EAST ST, 5-5A ROWELL ST GRANVILLE NSW 2142</p> <p>DRAWING TITLE PUBLIC DOMAIN CIVIL WORKS LEVELS PLAN - SHEET 2</p> <p>SCALE 1:250@A1 1:500@A3</p> <p>DATE 10.11.2016</p> <p>DRAWN TF</p> <p>CHECKED LP</p> <p>JOB 0991</p> <p>DRAWING DA-C-102</p> <p>REVISION D</p>
REVISION	DATE	DESCRIPTION	BY																				
A	2016.11.17	PRELIMINARY ISSUE FOR COORDINATION	LP																				
B	2016.11.18	DEVELOPMENT APPLICATION	LP																				
C	2016.11.17	DEVELOPMENT APPLICATION	LP																				
D	2017.02.03	DEVELOPMENT APPLICATION	LP																				



SECTION
COWPER STREET FRONTAGE

SCALE: 1:50

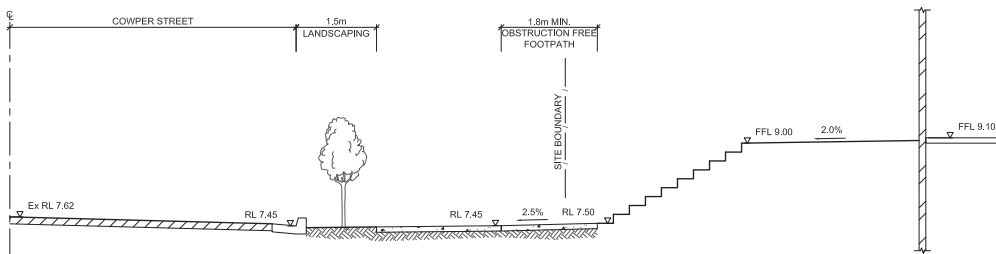
3
101



SECTION
COWPER STREET FRONTAGE

SCALE: 1:50

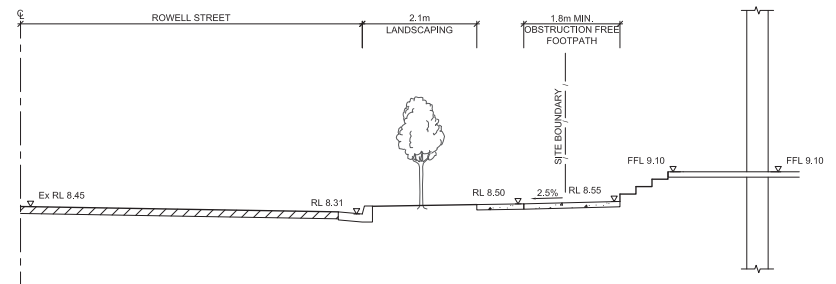
2
101



SECTION
COWPER STREET FRONTAGE

SCALE: 1:50

1
101



SECTION
ROWELL STREET FRONTAGE

SCALE: 1:50

4
101



IMPORTANT NOTES:
Do not scale from drawings. All dimensions shall be checked on site before commencement of work. All discrepancies shall be brought to the attention of the Architect. Larger scale drawings and written dimensions take precedence. This drawing is copyright and the property of the author, and must not be retained, copied or used without the express authority of MARCHESE PARTNERS ENGINEERING PTY. LTD.

DEVELOPMENT APPLICATION

REVISION	DATE	DESCRIPTION	BY
A	2016.11.15	PRELIMINARY ISSUE FOR COORDINATION	LP
B	2016.11.16	DEVELOPMENT APPLICATION	LP
C	2016.11.17	DEVELOPMENT APPLICATION	LP
D	2017.02.03	DEVELOPMENT APPLICATION	LP

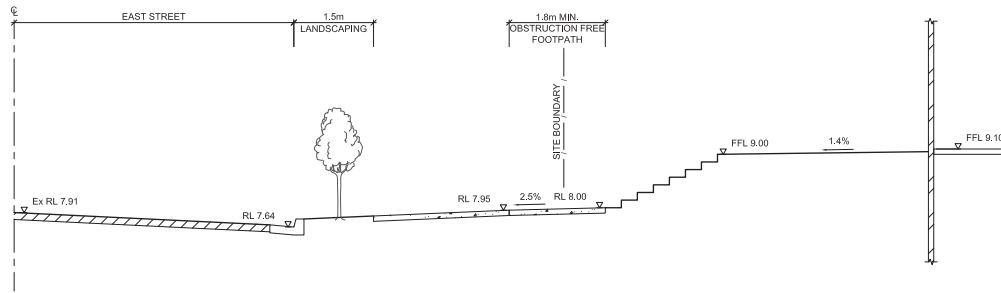
marchesepartners
engineering

Marchese Partners Engineering Pty Ltd
Level 1, 53 Walker Street, North Sydney, NSW 2060, Australia
P +61 2 9922 4375 F +61 2 9929 5786 E Info@marchesepartners.com.au
www.marchesepartners.com.au
Sydney • Brisbane • Canberra • Melbourne • Adelaide • Perth
Kuala Lumpur • Auckland
ABN 32 604 104 378

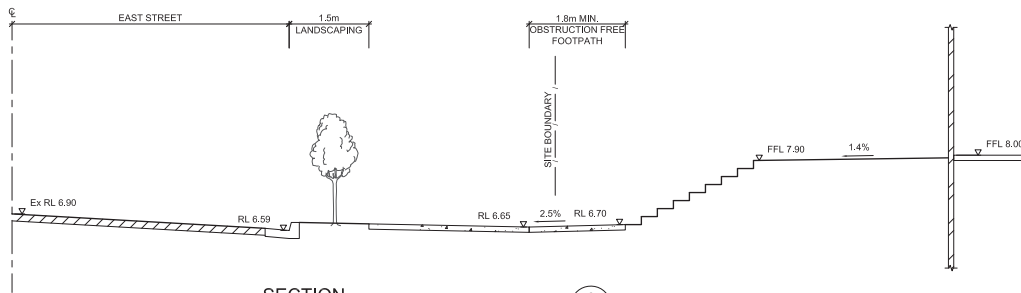


CLIENT DPG PROJECT 7 PTY LTD
PROJECT 14-38 COWPER ST, 21-41 EAST ST, 5-5A ROWELL ST GRANVILLE NSW 2142

DRAWING TITLE PUBLIC DOMAIN CIVIL WORKS - SITE FRONTAGE CROSS SECTIONS-SHEET 1			
SCALE 1:50@A1 1:100@A3	DATE 10.11.2016	DRAWN TF	CHECKED LP
JOB 0991	DRAWING DA-C-103	REVISION D	



SECTION
EAST STREET FRONTAGE
SCALE: 1:50



SECTION
EAST STREET FRONTAGE
SCALE: 1:50



SECTION
EAST STREET FRONTAGE
SCALE: 1:50



IMPORTANT NOTES:
Do not scale from drawings. All dimensions shall be checked on site before commencement of work. All discrepancies shall be brought to the attention of the Architect. Larger scale drawings and written dimensions take precedence. This drawing is copyright and the property of the author, and must not be retained, copied or used without the express authority of MARCHESE PARTNERS ENGINEERING PTY. LTD.

DEVELOPMENT
APPLICATION

REVISION	DATE	DESCRIPTION	BY
A	2016.11.10	PRELIMINARY ISSUE FOR COORDINATION	LP
B	2016.11.16	DEVELOPMENT APPLICATION	LP
C	2016.11.17	DEVELOPMENT APPLICATION	LP
D	2017.02.03	DEVELOPMENT APPLICATION	LP

marchesepartners
engineering

Marchese Partners Engineering Pty Ltd
Level 1, 53 Walker Street, North Sydney, NSW 2060, Australia
P +61 2 9922 4375 F +61 2 9929 5786 E Info@marchesepartners.com.au
www.marchesepartners.com.au
Sydney • Brisbane • Canberra • Melbourne • Adelaide • Perth
Kuala Lumpur • Auckland
ABN 32 604 104 378

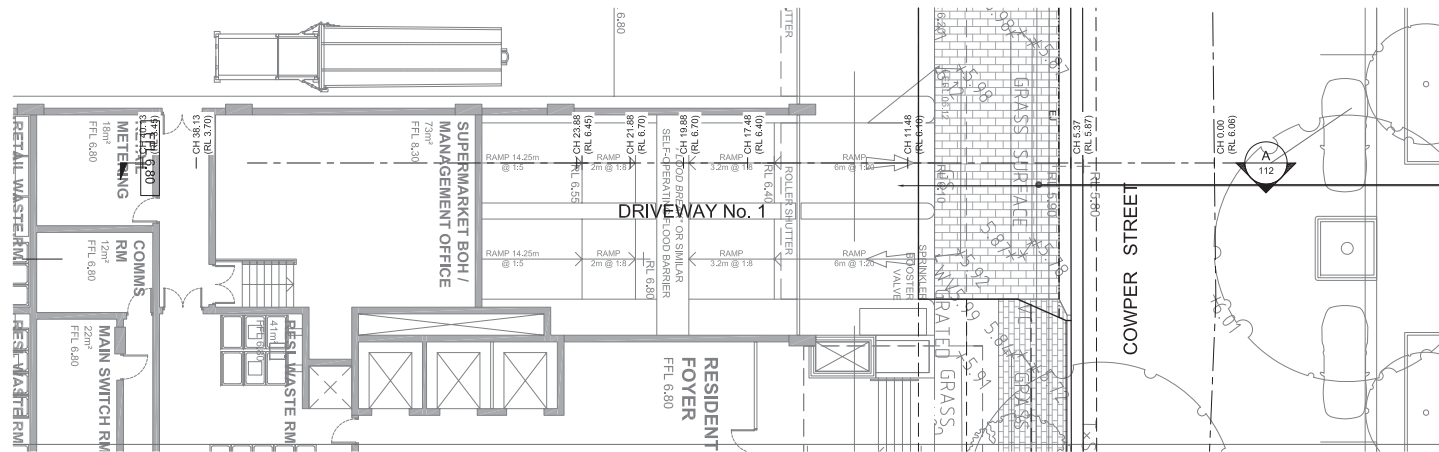


CLIENT
DPG PROJECT 7 PTY LTD

PROJECT
14-38 COWPER ST, 21-41 EAST ST,
5-5A ROWELL ST GRANVILLE NSW 2142

DRAWING TITLE
PUBLIC DOMAIN CIVIL WORKS - SITE
FRONTAGE CROSS SECTIONS-SHEET 2

SCALE 1:50@A1 1:100@A3	DATE 10.11.2016	DRAWN TF	CHECKED LP
JOB 0991	DRAWING DA-C-104	REVISION D	



DRIVEWAY No. 1 PLAN
SCALE 1:100

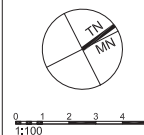
IMPORTANT NOTES:
Do not scale from drawings. All dimensions shall be checked on site before commencement of work. All discrepancies shall be brought to the attention of the Architect. Larger scale drawings and written dimensions take precedence. This drawing is copyright and the property of the author, and must not be retained, copied or used without the express authority of MARCHESE PARTNERS ENGINEERING PTY. LTD.

DEVELOPMENT APPLICATION

REVISION	DATE	DESCRIPTION	BY
A	2016.11.16	PRELIMINARY ISSUE FOR COORDINATION	LP
B	2016.11.16	DEVELOPMENT APPLICATION	LP
C	2016.11.17	DEVELOPMENT APPLICATION	LP
D	2017.02.03	DEVELOPMENT APPLICATION	LP

marchesepartners
engineering

Marchese Partners Engineering Pty Ltd
Level 1, 53 Walker Street, North Sydney, NSW 2060, Australia
P +61 2 9922 4375 F +61 2 9929 5786 E Info@marchesepartners.com.au
www.marchesepartners.com.au
Sydney • Brisbane • Canberra • Melbourne • Adelaide • Perth
Kuala Lumpur • Auckland
ABN 32 604 104 378

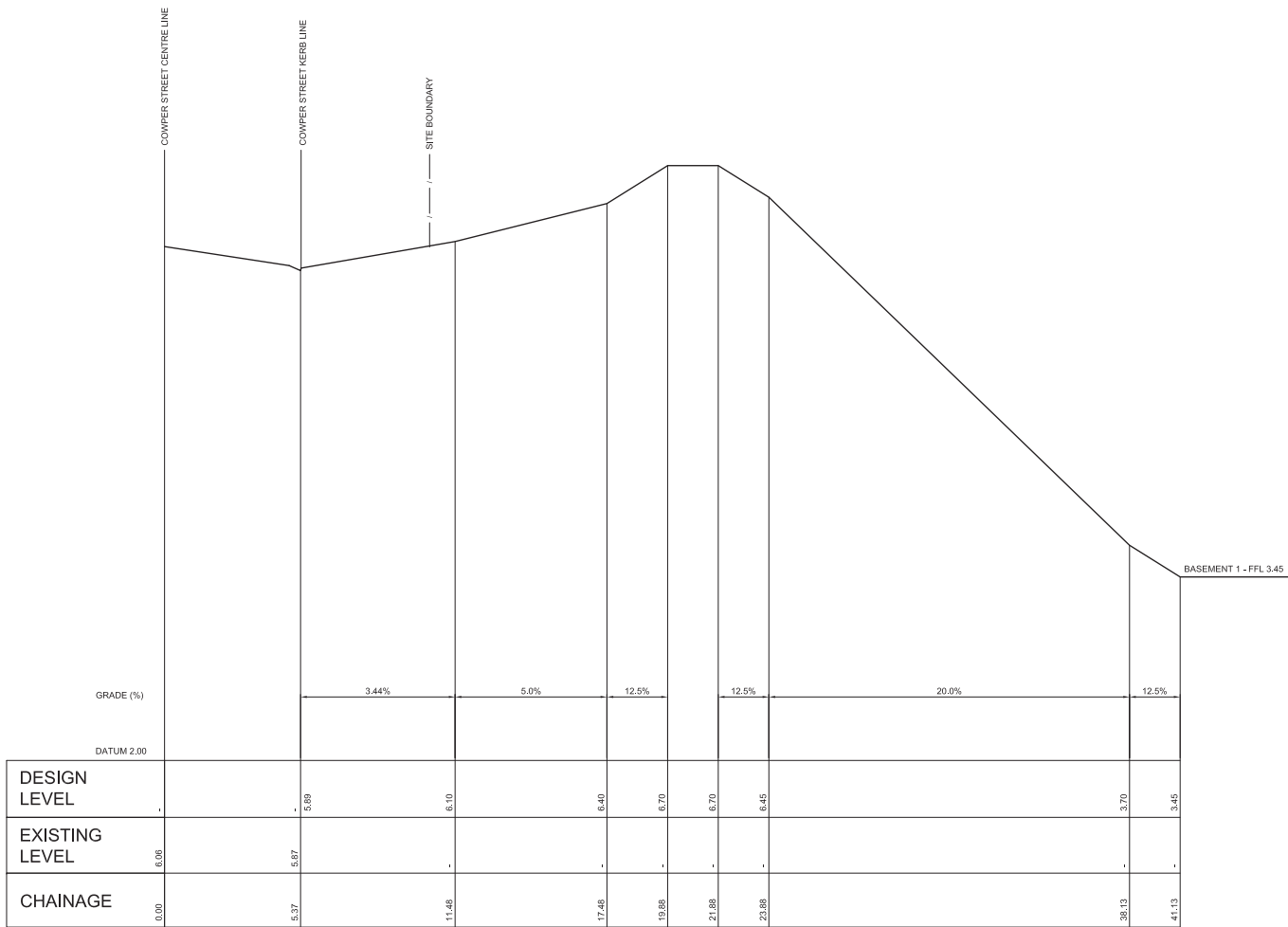


CLIENT
DPG PROJECT 7 PTY LTD

PROJECT
14-38 COWPER ST, 21-41 EAST ST,
5-5A ROWELL ST GRANVILLE NSW 2142

DRAWING TITLE
PUBLIC DOMAIN CIVIL WORKS
DRIVEWAY No. 1 PLAN

SCALE 1:100@A1 1:200@A3	DATE 10.11.2016	DRAWN TF	CHECKED LP
JOB 0991	DRAWING DA-C-111	REVISION D	



DRIVEWAY No.1 LONGITUDINAL SECTION - A
SCALE 1:100 HORIZONTAL
1:20 VERTICAL

IMPORTANT NOTES:
Do not scale from drawings. All dimensions shall be checked on site before commencement of work. All discrepancies shall be brought to the attention of the Architect. Larger scale drawings and written dimensions take precedence. This drawing is copyright and the property of the author, and must not be retained, copied or used without the express authority of MARCHESE PARTNERS ENGINEERING PTY. LTD.

DEVELOPMENT APPLICATION

REVISION	DATE	DESCRIPTION	BY
A	2016.11.10	PRELIMINARY ISSUE FOR COORDINATION	LP
B	2016.11.16	DEVELOPMENT APPLICATION	LP
C	2016.11.17	DEVELOPMENT APPLICATION	LP
D	2017.02.03	DEVELOPMENT APPLICATION	LP

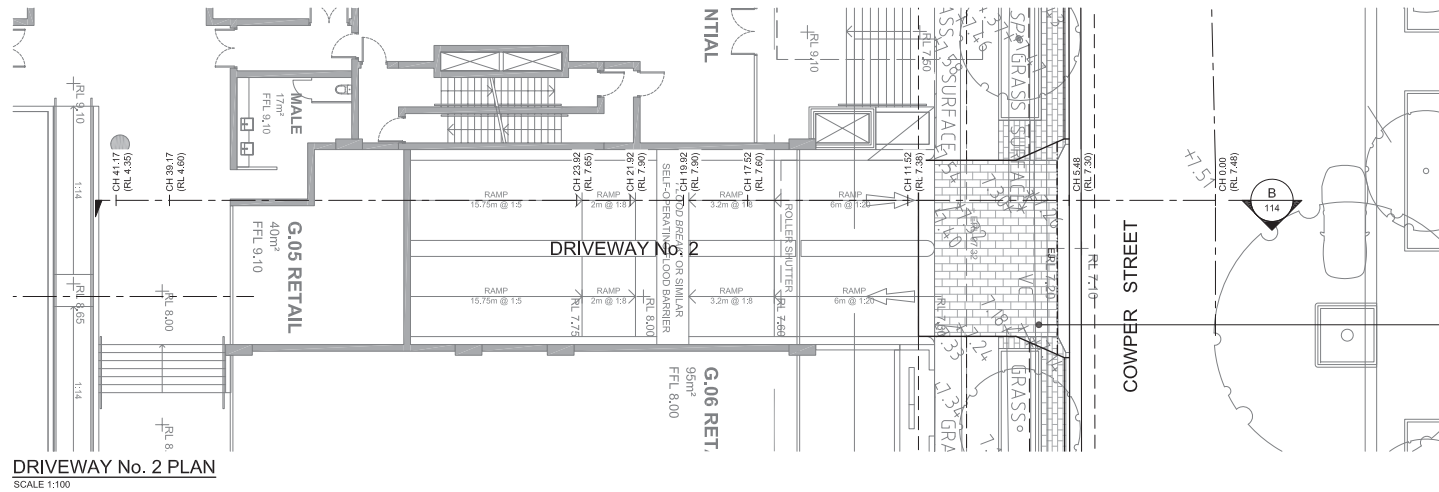
marchesepartners
engineering

Marchese Partners Engineering Pty Ltd
Level 1, 53 Walker Street, North Sydney, NSW 2060, Australia
P +61 2 9922 4375 F +61 2 9929 5786 E Info@marchesepartners.com.au
www.marchesepartners.com.au
Sydney • Brisbane • Canberra • Melbourne • Adelaide • Perth
Kuala Lumpur • Auckland
ABN 32 604 104 378

0 1 2 3 4 5
1:100

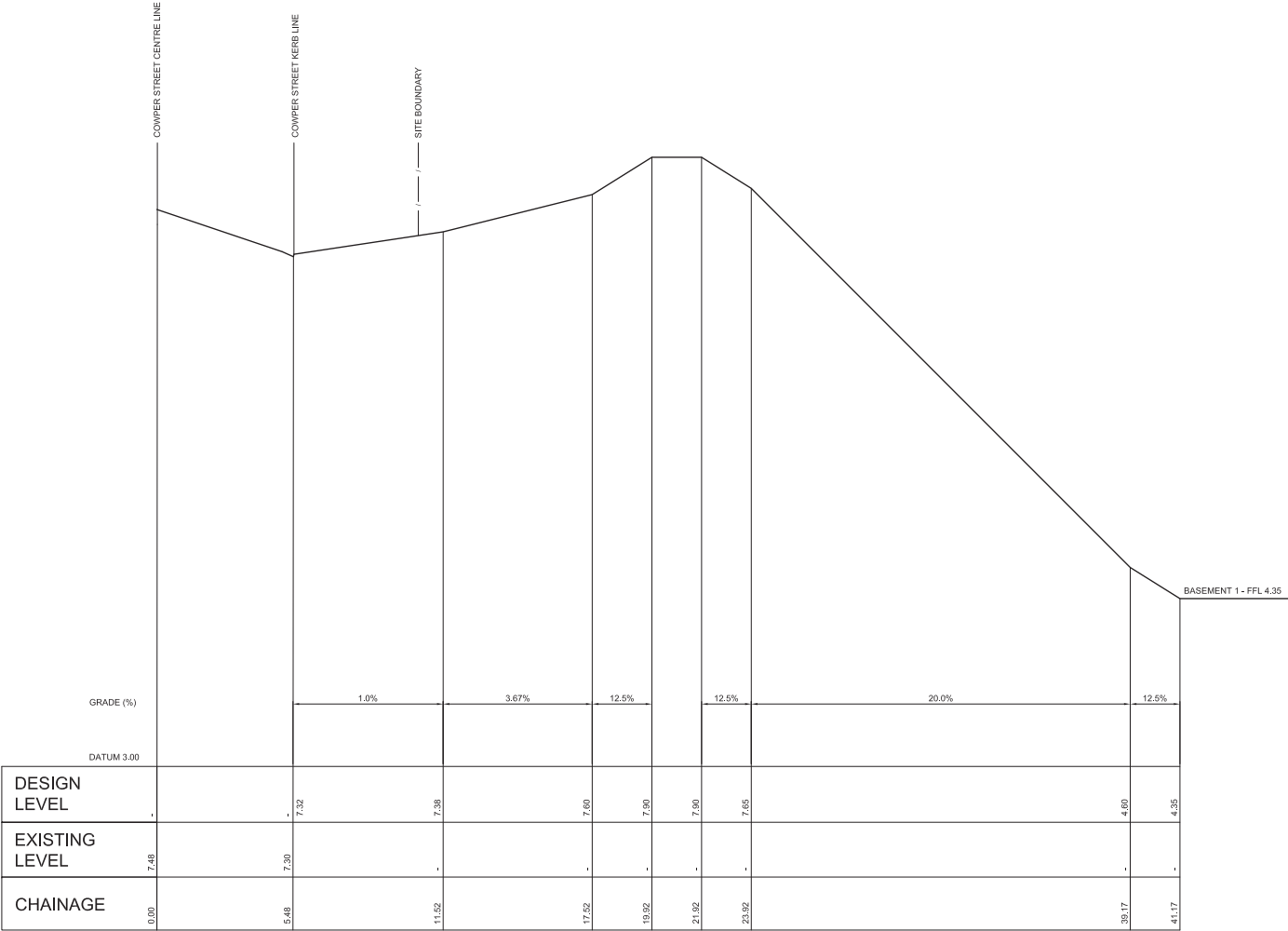
CLIENT	DPG PROJECT 7 PTY LTD
PROJECT	14-38 COWPER ST, 21-41 EAST ST, 5-5A ROWELL ST GRANVILLE NSW 2142

DRAWING TITLE			
PUBLIC DOMAIN CIVIL WORKS DRIVEWAY No. 1 LONG SECTION A			
SCALE	DATE	DRAWN	CHECKED
AS SHOWN @ A1	10.11.2016	TF	LP
JOB	DRAWING	REVISION	
0991	DA-C-112	D	



DRIVEWAY No. 2 PLAN
SCALE 1:100

<div>IMPORTANT NOTES:</div> <div>Do not scale from drawings. All dimensions shall be checked on site before commencement of work. All discrepancies shall be brought to the attention of the Architect. Larger scale drawings and written dimensions take precedence. This drawing is copyright and the property of the author, and must not be retained, copied or used without the express authority of MARCHESE PARTNERS ENGINEERING PTY. LTD.</div> <div>DEVELOPMENT APPLICATION</div>	REVISION	DATE	DESCRIPTION	BY											
	A	2016.11.15	PRELIMINARY ISSUE FOR COORDINATION	LP											
	B	2016.11.16	DEVELOPMENT APPLICATION	LP											
	C	2016.11.17	DEVELOPMENT APPLICATION	LP											
	D	2017.02.03	DEVELOPMENT APPLICATION	LP											
<div>marchesepartners</div> <div>engineering</div> <div>Marchese Partners Engineering Pty Ltd Level 1, 53 Walker Street, North Sydney, NSW 2060, Australia P +61 2 9922 4375 F +61 2 9929 5786 E Info@marchesepartners.com.au www.marchesepartners.com.au Sydney • Brisbane • Canberra • Melbourne • Adelaide • Perth Kuala Lumpur • Auckland ABN 32 604 104 378</div>					<div><div>0 1 2 3 4 5 1:100</div></div>	<div>CLIENT DPG PROJECT 7 PTY LTD</div> <div>PROJECT 14-38 COWPER ST, 21-41 EAST ST, 5-5A ROWELL ST GRANVILLE NSW 2142</div>	<div>DRAWING TITLE PUBLIC DOMAIN CIVIL WORKS DRIVEWAY No. 2 PLAN</div> <table><tr><td>SCALE 1:100@A1 1:200@A3</td><td>DATE 10.11.2016</td><td>DRAWN TF</td><td>CHECKED LP</td></tr><tr><td>JOB 0991</td><td>DRAWING DA-C-113</td><td colspan="2">REVISION D</td></tr></table>	SCALE 1:100@A1 1:200@A3	DATE 10.11.2016	DRAWN TF	CHECKED LP	JOB 0991	DRAWING DA-C-113	REVISION D	
SCALE 1:100@A1 1:200@A3	DATE 10.11.2016	DRAWN TF	CHECKED LP												
JOB 0991	DRAWING DA-C-113	REVISION D													



DRIVEWAY No.2 LONGITUDINAL SECTION - B
SCALE 1:100 HORIZONTAL
1:20 VERTICAL

IMPORTANT NOTES:
Do not scale from drawings. All dimensions shall be checked on site before commencement of work. All discrepancies shall be brought to the attention of the Architect. Larger scale drawings and written dimensions take precedence. This drawing is copyright and the property of the author, and must not be retained, copied or used without the express authority of MARCHESE PARTNERS ENGINEERING PTY. LTD.

DEVELOPMENT APPLICATION

REVISION	DATE	DESCRIPTION	BY
A	2016.11.10	PRELIMINARY ISSUE FOR COORDINATION	LP
B	2016.11.16	DEVELOPMENT APPLICATION	LP
C	2016.11.17	DEVELOPMENT APPLICATION	LP
D	2017.02.03	DEVELOPMENT APPLICATION	LP

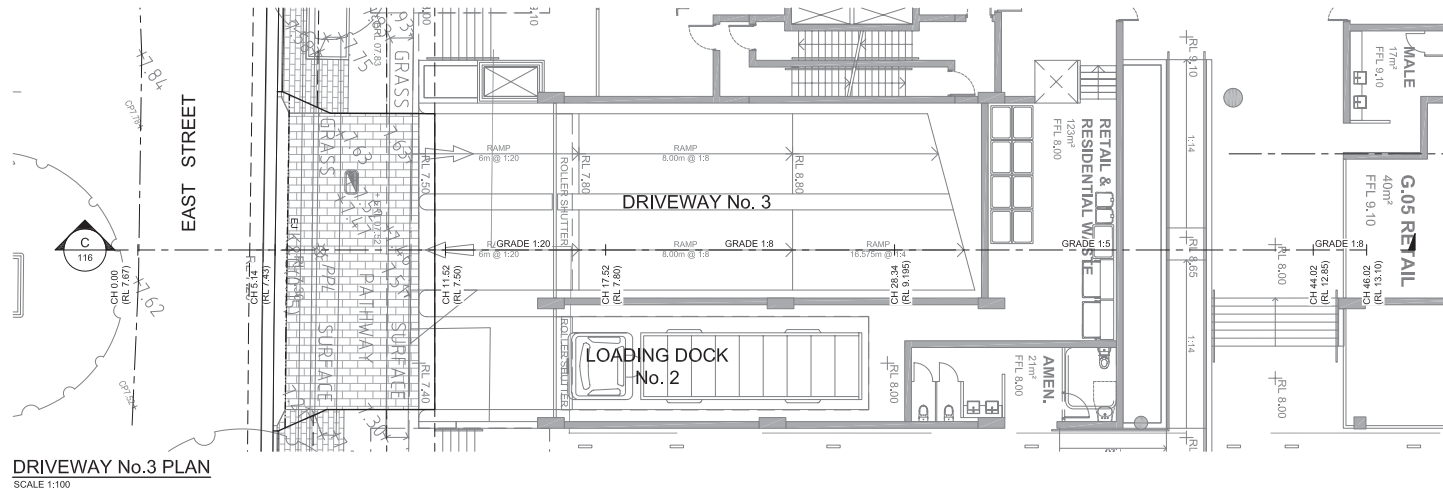
marchesepartners
engineering

Marchese Partners Engineering Pty Ltd
Level 1, 53 Walker Street, North Sydney, NSW 2060, Australia
P +61 2 9922 4375 F +61 2 9929 5786 E Info@marchesepartners.com.au
www.marchesepartners.com.au
Sydney • Brisbane • Canberra • Melbourne • Adelaide • Perth
Kuala Lumpur • Auckland
ABN 32 604 104 378

0 1 2 3 4 5
1:100

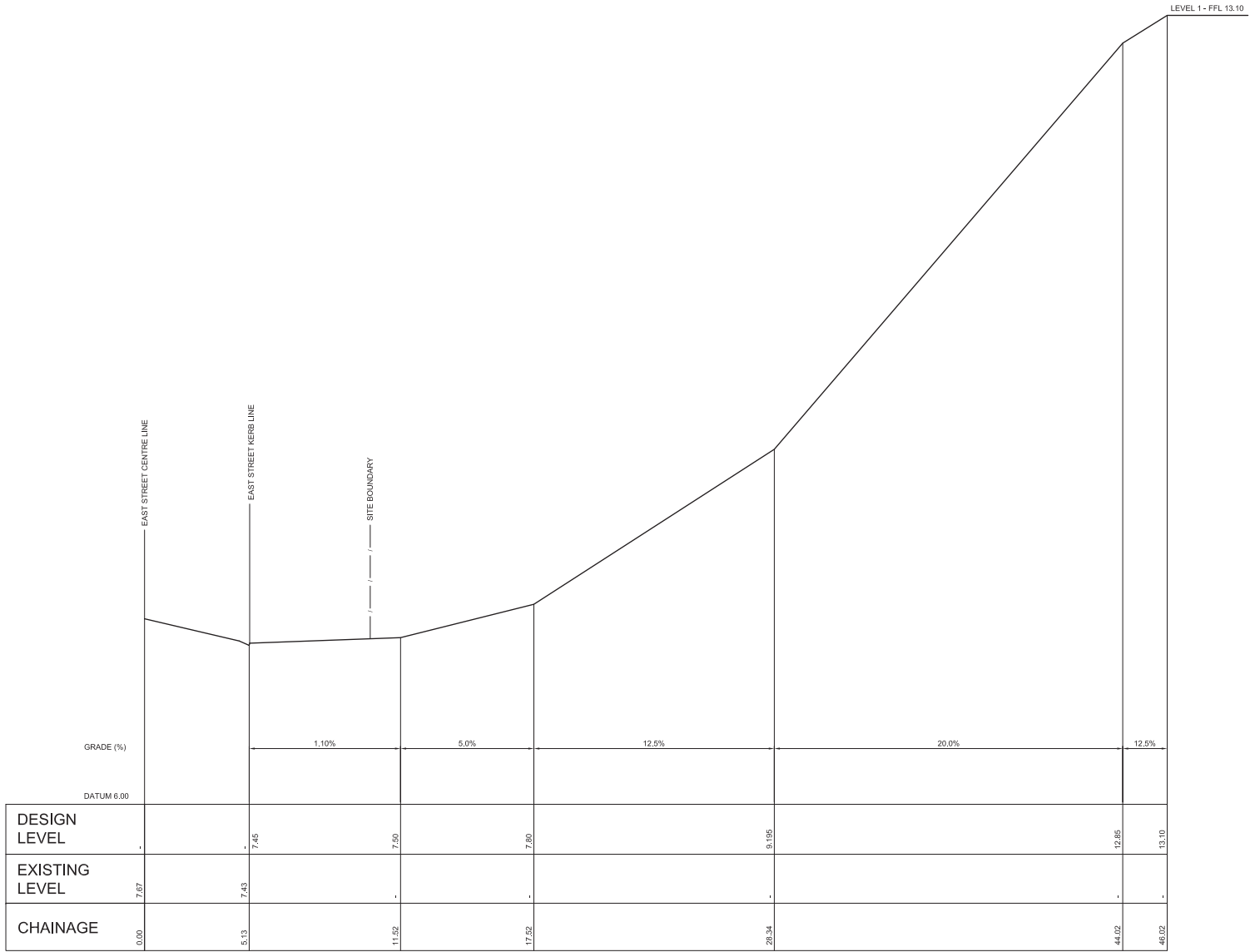
CLIENT DPG PROJECT 7 PTY LTD
PROJECT 14-38 COWPER ST, 21-41 EAST ST, 5-5A ROWELL ST GRANVILLE NSW 2142

DRAWING TITLE PUBLIC DOMAIN CIVIL WORKS DRIVEWAY No. 2 LONG SECTION B			
SCALE AS SHOWN @ A1	DATE 10.11.2016	DRAWN TF	CHECKED LP
JOB 0991	DRAWING DA-C-114	REVISION D	



DRIVEWAY No.3 PLAN
SCALE 1:100

IMPORTANT NOTES: Do not scale from drawings. All dimensions shall be checked on site before commencement of work. All discrepancies shall be brought to the attention of the Architect. Larger scale drawings and written dimensions take precedence. This drawing is copyright and the property of the author, and must not be retained, copied or used without the express authority of MARCHESE PARTNERS ENGINEERING PTY. LTD.	REVISION	DATE	DESCRIPTION	BY						
	A	2016.11.16	PRELIMINARY ISSUE FOR COORDINATION	LP						
	B	2016.11.16	DEVELOPMENT APPLICATION	LP						
	C	2016.11.17	DEVELOPMENT APPLICATION	LP						
	D	2017.02.03	DEVELOPMENT APPLICATION	LP						
DEVELOPMENT APPLICATION	<div>marchesepartners engineering</div> <div>Marchese Partners Engineering Pty Ltd Level 1, 53 Walker Street, North Sydney, NSW 2060, Australia P +61 2 9922 4375 F +61 2 9929 5786 E Info@marchesepartners.com.au www.marchesepartners.com.au Sydney • Brisbane • Canberra • Melbourne • Adelaide • Perth Kuala Lumpur • Auckland ABN 32 604 104 378</div>				<div><div><div></div><div>TN</div><div>MN</div></div><div>0 1 2 3 4 5 1:100</div></div>	CLIENT DPG PROJECT 7 PTY LTD	DRAWING TITLE PUBLIC DOMAIN CIVIL WORKS DRIVEWAY No. 3 PLAN			
	PROJECT 14-38 COWPER ST, 21-41 EAST ST, 5-5A ROWELL ST GRANVILLE NSW 2142		SCALE 1:100@A1 1:200@A3	DATE 10.11.2016	DRAWN TF	CHECKED LP				
	JOB 0991		DRAWING DA-C-115		REVISION D					



DRIVEWAY No.3 LONGITUDINAL SECTION - C
SCALE 1:100 HORIZONTAL
1:20 VERTICAL

IMPORTANT NOTES:
Do not scale from drawings. All dimensions shall be checked on site before commencement of work. All discrepancies shall be brought to the attention of the Architect. Larger scale drawings and written dimensions take precedence. This drawing is copyright and the property of the author, and must not be retained, copied or used without the express authority of MARCHESE PARTNERS ENGINEERING PTY. LTD.

DEVELOPMENT APPLICATION

REVISION	DATE	DESCRIPTION	BY
A	2016.11.02	PRELIMINARY ISSUE FOR COORDINATION	LP
B	2016.11.16	DEVELOPMENT APPLICATION	LP
C	2016.11.17	DEVELOPMENT APPLICATION	LP
D	2017.02.03	DEVELOPMENT APPLICATION	LP

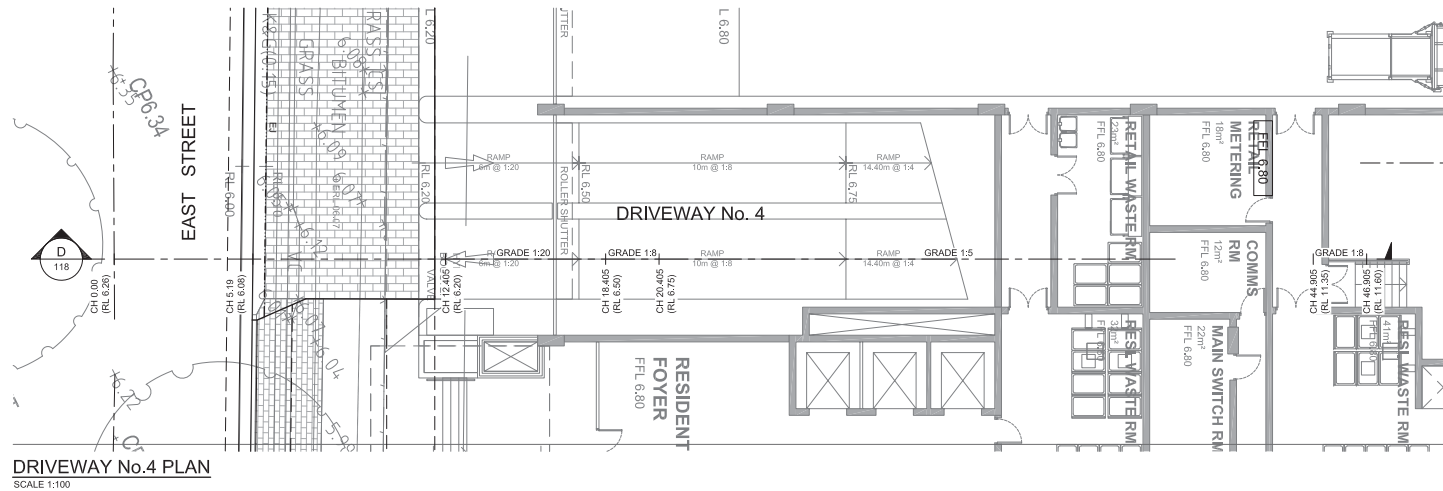
marchesepartners
engineering

Marchese Partners Engineering Pty Ltd
Level 1, 53 Walker Street, North Sydney, NSW 2060, Australia
P +61 2 9922 4375 F +61 2 9929 5786 E Info@marchesepartners.com.au
www.marchesepartners.com.au
Sydney • Brisbane • Canberra • Melbourne • Adelaide • Perth
Kuala Lumpur • Auckland
ABN 32 604 104 378



CLIENT DPG PROJECT 7 PTY LTD
PROJECT 14-38 COWPER ST, 21-41 EAST ST, 5-5A ROWELL ST GRANVILLE NSW 2142

DRAWING TITLE PUBLIC DOMAIN CIVIL WORKS DRIVEWAY No. 3 LONG SECTION C			
SCALE AS SHOWN @ A1	DATE 10.11.2016	DRAWN TF	CHECKED LP
JOB 0991	DRAWING DA-C-116	REVISION D	



DRIVEWAY No.4 PLAN
SCALE 1:100

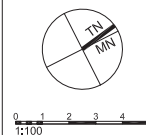
IMPORTANT NOTES:
Do not scale from drawings. All dimensions shall be checked on site before commencement of work. All discrepancies shall be brought to the attention of the Architect. Larger scale drawings and written dimensions take precedence. This drawing is copyright and the property of the author, and must not be retained, copied or used without the express authority of MARCHESE PARTNERS ENGINEERING PTY. LTD.

DEVELOPMENT APPLICATION

REVISION	DATE	DESCRIPTION	BY
A	2016.11.16	PRELIMINARY ISSUE FOR COORDINATION	LP
B	2016.11.16	DEVELOPMENT APPLICATION	LP
C	2016.11.17	DEVELOPMENT APPLICATION	LP
D	2017.02.03	DEVELOPMENT APPLICATION	LP

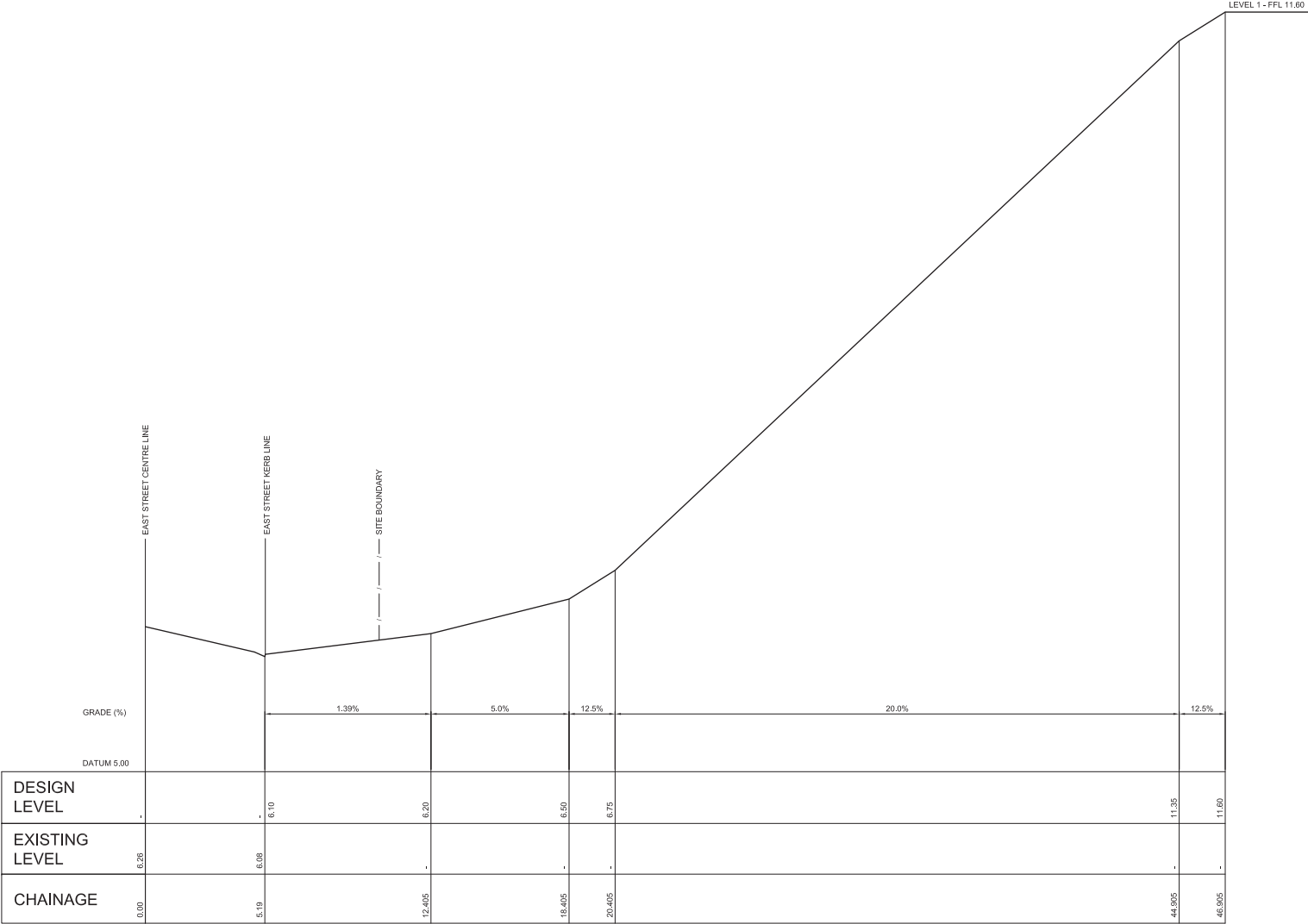
marchesepartners
engineering

Marchese Partners Engineering Pty Ltd
Level 1, 53 Walker Street, North Sydney, NSW 2060, Australia
P +61 2 9922 4375 F +61 2 9929 5786 E Info@marchesepartners.com.au
www.marchesepartners.com.au
Sydney • Brisbane • Canberra • Melbourne • Adelaide • Perth
Kuala Lumpur • Auckland
ABN 32 604 104 378



CLIENT	DPG PROJECT 7 PTY LTD
PROJECT	14-38 COWPER ST, 21-41 EAST ST, 5-5A ROWELL ST GRANVILLE NSW 2142

DRAWING TITLE			
PUBLIC DOMAIN CIVIL WORKS DRIVEWAY No. 4 PLAN			
SCALE 1:100@A1 1:200@A3	DATE 10.11.2016	DRAWN TF	CHECKED LP
JOB 0991	DRAWING DA-C-117	REVISION D	



DRIVEWAY No.4 LONGITUDINAL SECTION - D
SCALE 1:100 HORIZONTAL
1:20 VERTICAL

IMPORTANT NOTES:
Do not scale from drawings. All dimensions shall be checked on site before commencement of work. All discrepancies shall be brought to the attention of the Architect. Larger scale drawings and written dimensions take precedence. This drawing is copyright and the property of the author, and must not be retained, copied or used without the express authority of MARCHESE PARTNERS ENGINEERING PTY. LTD.

DEVELOPMENT APPLICATION

REVISION	DATE	DESCRIPTION	BY
A	2016.11.10	PRELIMINARY ISSUE FOR COORDINATION	LP
B	2016.11.16	DEVELOPMENT APPLICATION	LP
C	2016.11.17	DEVELOPMENT APPLICATION	LP
D	2017.02.03	DEVELOPMENT APPLICATION	LP

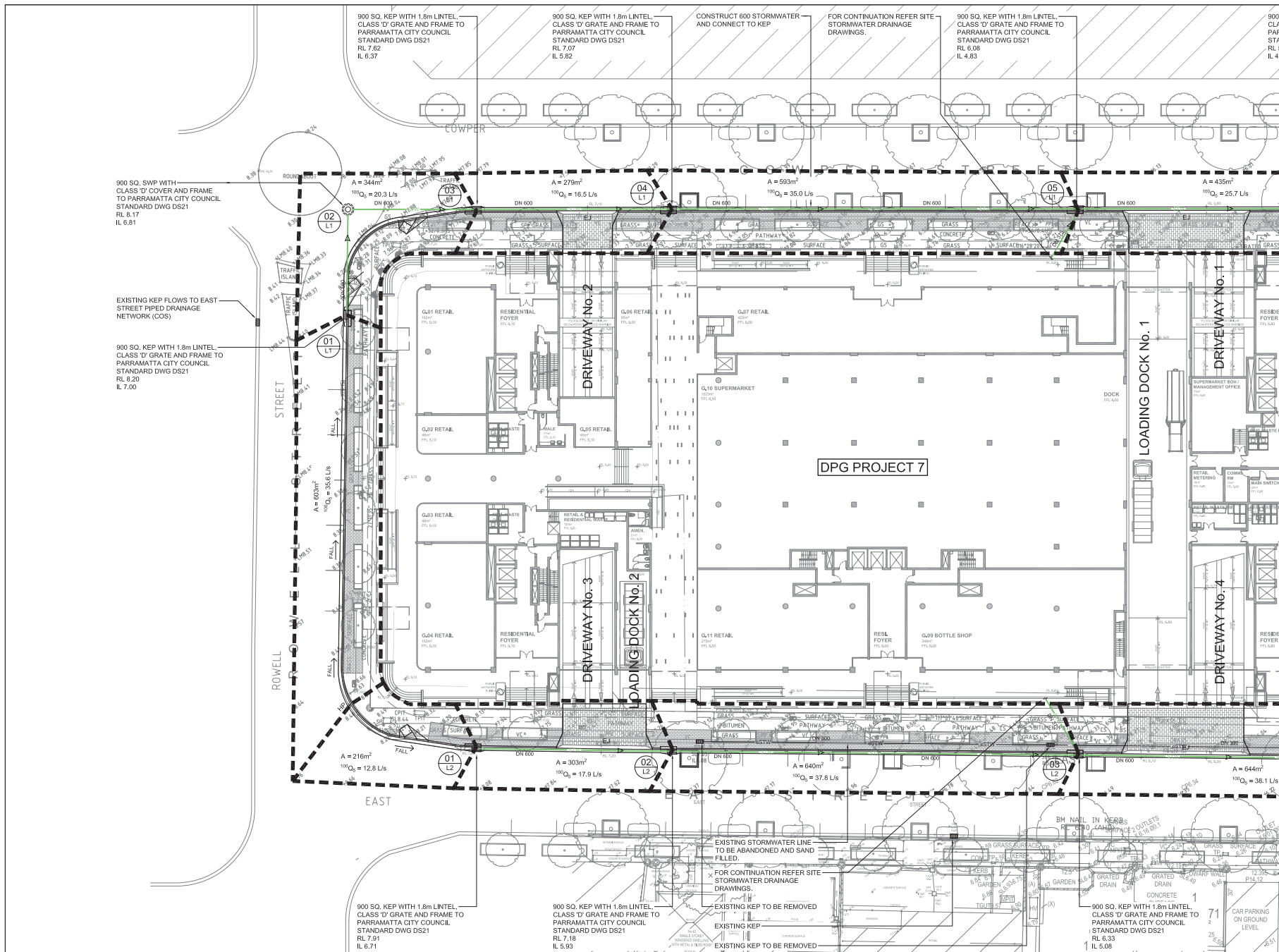
marchesepartners
engineering

Marchese Partners Engineering Pty Ltd
Level 1, 53 Walker Street, North Sydney, NSW 2060, Australia
P +61 2 9922 4375 F +61 2 9929 5786 E Info@marchesepartners.com.au
www.marchesepartners.com.au
Sydney • Brisbane • Canberra • Melbourne • Adelaide • Perth
Kuala Lumpur • Auckland
ABN 32 604 104 378



CLIENT DPG PROJECT 7 PTY LTD
PROJECT 14-38 COWPER ST, 21-41 EAST ST, 5-5A ROWELL ST GRANVILLE NSW 2142

DRAWING TITLE PUBLIC DOMAIN CIVIL WORKS DRIVEWAY No. 4 LONG SECTION D			
SCALE AS SHOWN @ A1	DATE 10.11.2016	DRAWN TF	CHECKED LP
JOB 0991	DRAWING DA-C-118	REVISION D	



STORMWATER CALCS:

C = 1.0 (ROOF)
C = 0.95 (PAVED)
C = 0.7 (LANDSCAPE)
 $20 I_t = 174\text{mm/hr}$
 $100 I_t = 224\text{mm/hr}$
 $Q = \frac{C \cdot I \cdot A}{3600}$ (L/s)

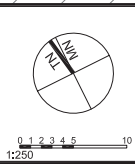
IMPORTANT NOTES:
Do not scale from drawings. All dimensions shall be checked on site before commencement of work. All discrepancies shall be brought to the attention of the Architect. Larger scale drawings and written dimensions take precedence. This drawing is copyright and the property of the author, and must not be retained, copied or used without the express authority of MARCHESE PARTNERS ENGINEERING PTY. LTD.

DEVELOPMENT APPLICATION

REVISION	DATE	DESCRIPTION	BY
A	2016.11.12	PRELIMINARY ISSUE FOR COORDINATION	LP
B	2016.11.16	DEVELOPMENT APPLICATION	LP
C	2016.11.20	DEVELOPMENT APPLICATION - DRAFT REVIEW	LP
D	2017.02.03	DEVELOPMENT APPLICATION	LP

marchesepartners
engineering

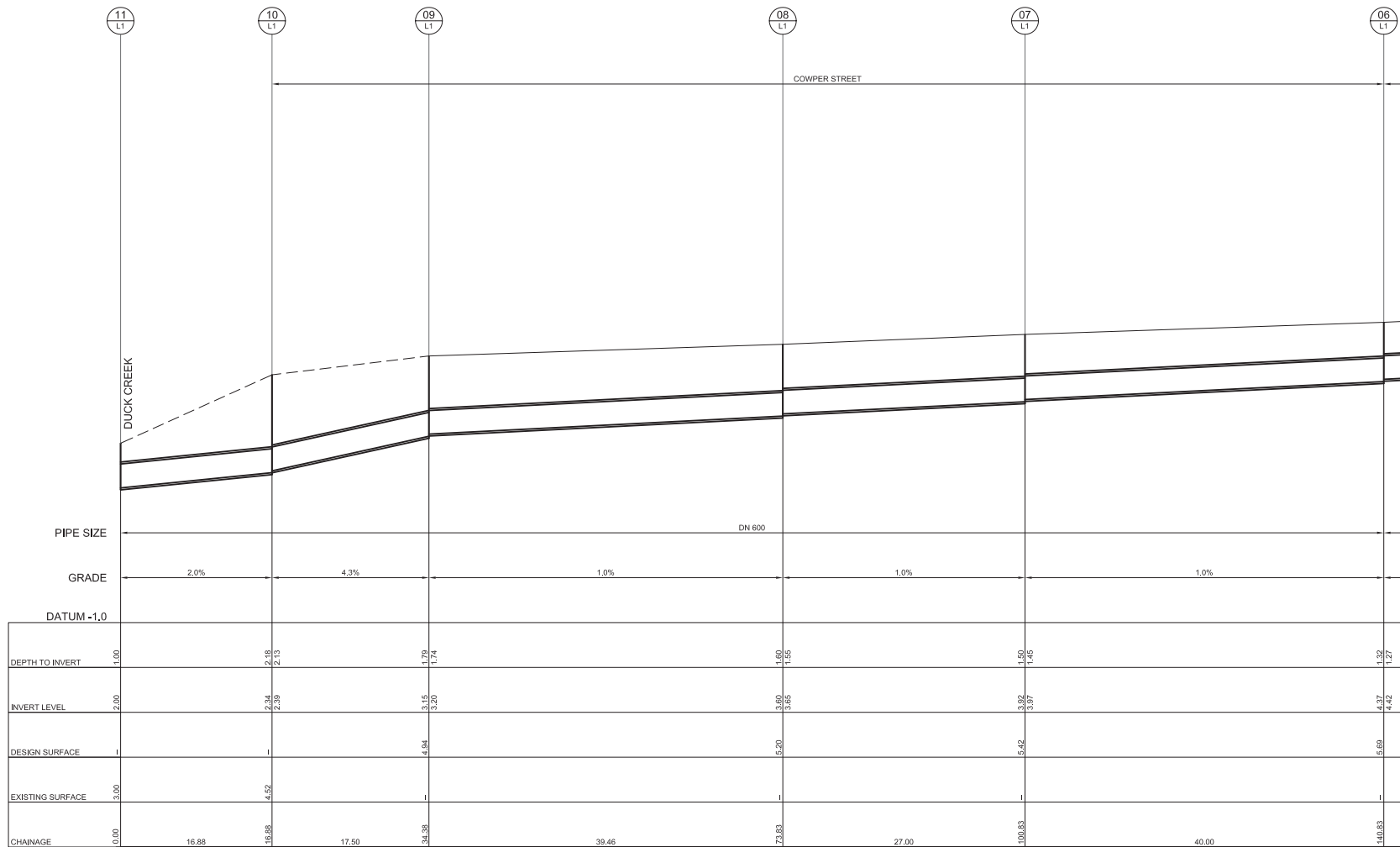
Marchese Partners Engineering Pty Ltd
Level 1, 53 Walker Street, North Sydney, NSW 2060, Australia
P +61 2 9922 4375 F +61 2 9929 5786 E info@marchesepartners.com.au
www.marchesepartners.com.au
Sydney • Brisbane • Canberra • Melbourne • Adelaide • Perth
Kuala Lumpur • Auckland
ABN 32 604 104 378



CLIENT
DPG PROJECT 7 PTY LTD

PROJECT
14-38 COWPER ST, 21-41 EAST ST,
5-5A ROWELL ST GRANVILLE NSW 2142

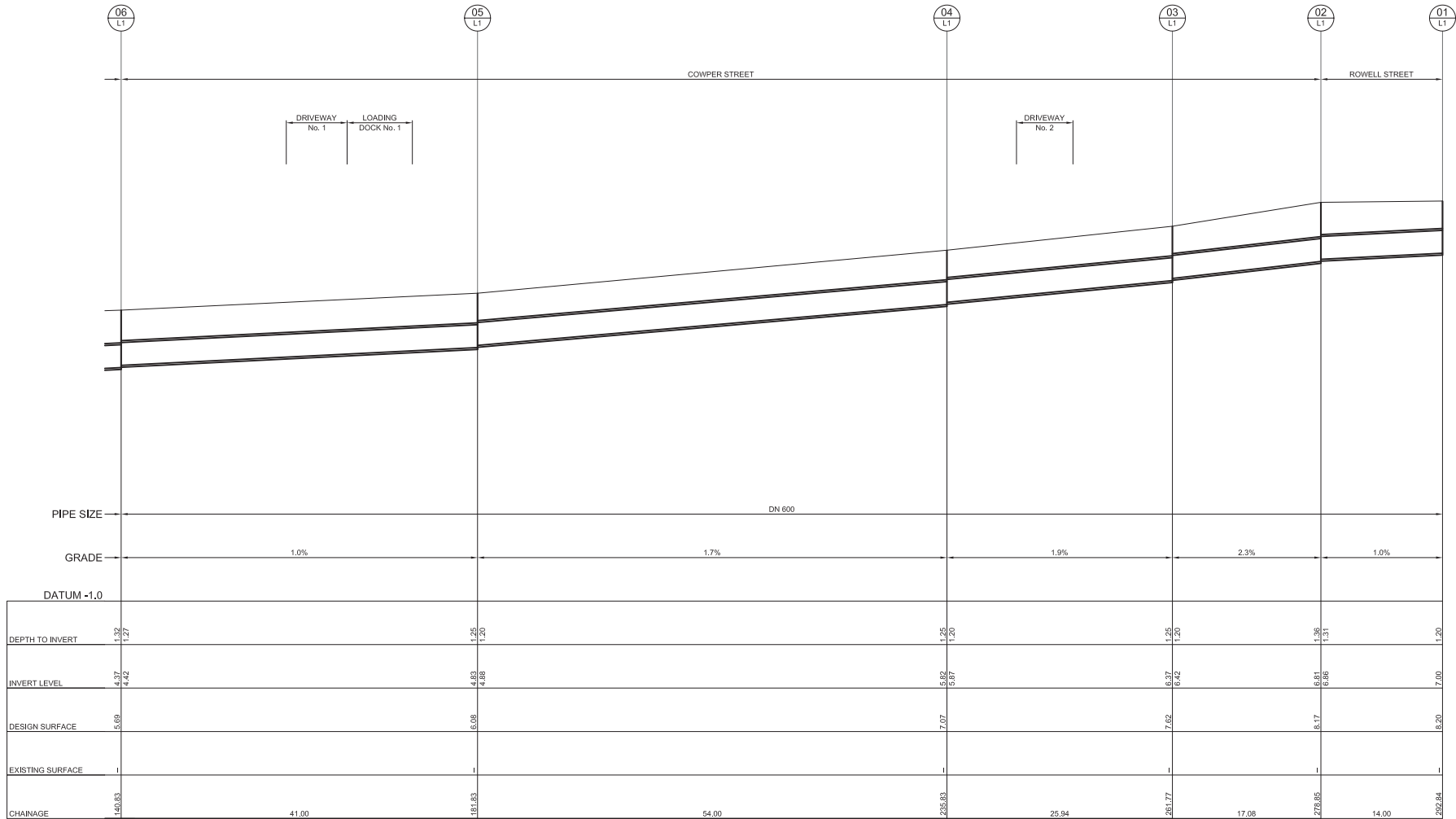
DRAWING TITLE		DATE		DRAWN	CHECKED
PUBLIC DOMAIN CIVIL WORKS DRAINAGE PLAN - SHEET 1		10.11.2016		TF	LP
SCALE 1:250@A1 1:500@A3	JOB 0991	DRAWING DA-C-301	REVISION D		



STORMWATER LONGITUDINAL SECTION
SCALE 1:250 (HORIZONTAL)
SCALE 1:50 (VERTICAL)



IMPORTANT NOTES: Do not scale from drawings. All dimensions shall be checked on site before commencement of work. All discrepancies shall be brought to the attention of the Architect. Larger scale drawings and written dimensions take precedence. This drawing is copyright and the property of the author, and must not be retained, copied or used without the express authority of MARCHESE PARTNERS ENGINEERING PTY. LTD.	REVISION	DATE	DESCRIPTION	BY
	A	2016.11.12	PRELIMINARY ISSUE FOR COORDINATION	LP
	B	2016.11.16	DEVELOPMENT APPLICATION	LP
	C	2016.11.20	DEVELOPMENT APPLICATION - DRAFT REVIEW	LP
DEVELOPMENT APPLICATION	D	2017.02.03	DEVELOPMENT APPLICATION	LP
	marchesepartners engineering Marchese Partners Engineering Pty Ltd Level 1, 53 Walker Street, North Sydney, NSW 2060, Australia P +61 2 9922 4375 F +61 2 9929 5786 E Info@marchesepartners.com.au www.marchesepartners.com.au Sydney • Brisbane • Canberra • Melbourne • Adelaide • Perth Kuala Lumpur • Auckland ABN 32 604 104 378			
	CLIENT DPG PROJECT 7 PTY LTD			
	PROJECT 14-38 COWPER ST, 21-41 EAST ST, 5-5A ROWELL ST GRANVILLE NSW 2142			
DRAWING TITLE PUBLIC DOMAIN CIVIL WORKS STORMWATER LONG SECTIONS - SHEET 1		SCALE AS SHOWN	DATE 10.11.2016	DRAWN TF
JOB 0991		DRAWING DA-C-321		CHECKED LP
				REVISION D



STORMWATER LONGITUDINAL SECTION
SCALE 1:250 (HORIZONTAL)
SCALE 1:50 (VERTICAL)



IMPORTANT NOTES:

Do not scale from drawings. All dimensions shall be checked on site before commencement of work. All discrepancies shall be brought to the attention of the Architect. Larger scale drawings and written dimensions take precedence. This drawing is copyright and the property of the author, and must not be retained, copied or used without the express authority of MARCHESE PARTNERS ENGINEERING PTY. LTD.

REVISION	DATE	DESCRIPTION	BY
A	2016.11.10	PRELIMINARY ISSUE FOR COORDINATION	LP
B	2016.11.16	DEVELOPMENT APPLICATION	LP
C	2016.11.20	DEVELOPMENT APPLICATION - DRAFT REVIEW	LP
D	2017.02.03	DEVELOPMENT APPLICATION	LP

DEVELOPMENT APPLICATION

marchesepartners
engineering

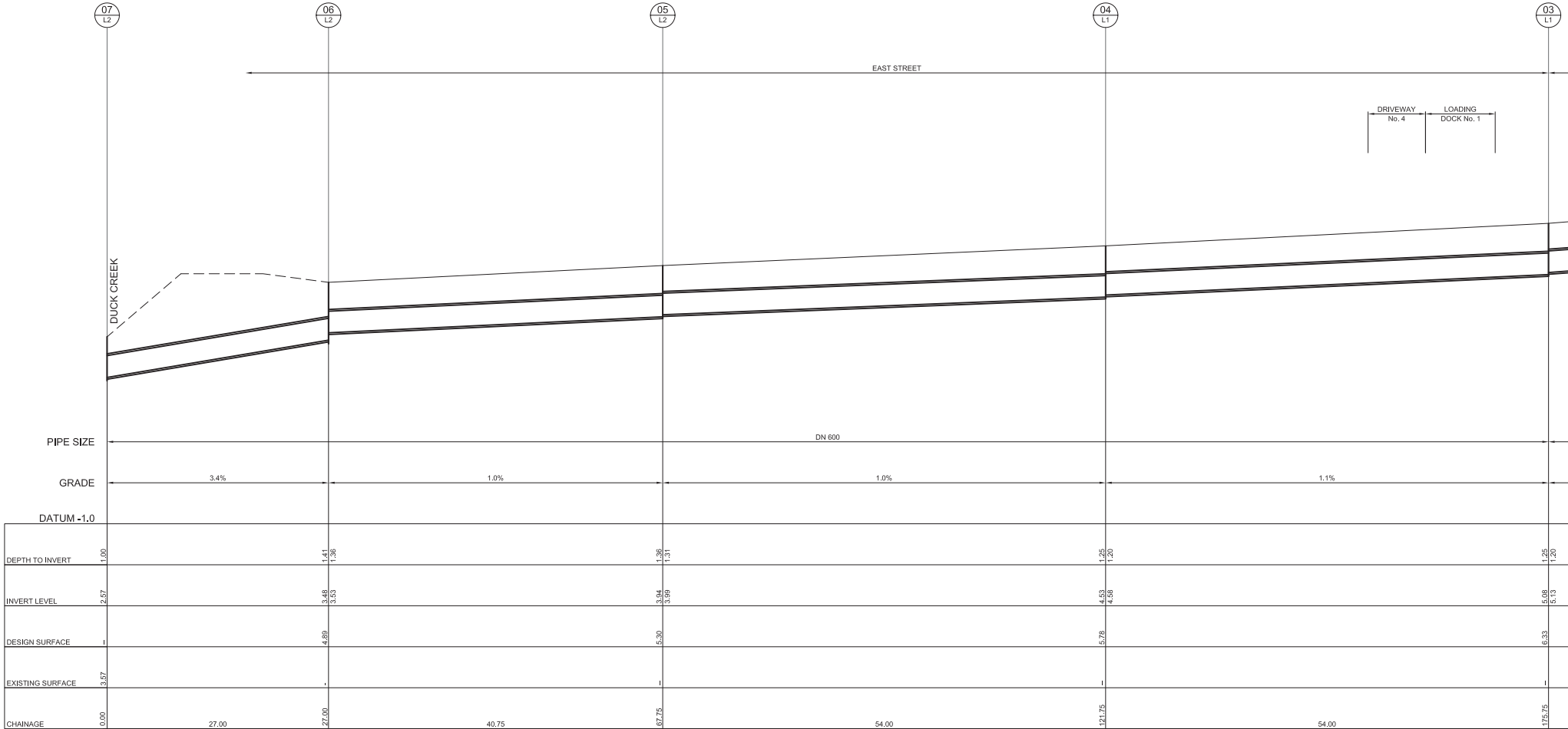
Marchese Partners Engineering Pty Ltd
Level 1, 53 Walker Street, North Sydney, NSW 2060, Australia
P +61 2 9922 4375 F +61 2 9929 5786 E Info@marchesepartners.com.au
www.marchesepartners.com.au
Sydney • Brisbane • Canberra • Melbourne • Adelaide • Perth
Kuala Lumpur • Auckland
ABN 32 604 104 378

CLIENT
DPG PROJECT 7 PTY LTD

PROJECT
14-38 COWPER ST, 21-41 EAST ST,
5-5A ROWELL ST GRANVILLE NSW 2142

DRAWING TITLE
PUBLIC DOMAIN CIVIL WORKS
STORMWATER LONG SECTIONS - SHEET 2

SCALE AS SHOWN	DATE 10.11.2016	DRAWN TF	CHECKED LP
JOB 0991	DRAWING DA-C-322	REVISION D	



STORMWATER LONGITUDINAL SECTION
SCALE 1:250 (HORIZONTAL)
SCALE 1:50 (VERTICAL)



IMPORTANT NOTES:

Do not scale from drawings. All dimensions shall be checked on site before commencement of work. All discrepancies shall be brought to the attention of the Architect. Larger scale drawings and written dimensions take precedence. This drawing is copyright and the property of the author, and must not be retained, copied or used without the express authority of MARCHESE PARTNERS ENGINEERING PTY. LTD.

DEVELOPMENT APPLICATION

REVISION	DATE	DESCRIPTION	BY
A	2016.11.10	PRELIMINARY ISSUE FOR COORDINATION	LP
B	2016.11.16	DEVELOPMENT APPLICATION	LP
C	2016.11.20	DEVELOPMENT APPLICATION - DRAFT REVIEW	LP
D	2017.02.03	DEVELOPMENT APPLICATION	LP

marchesepartners
engineering

Marchese Partners Engineering Pty Ltd
Level 1, 53 Walker Street, North Sydney, NSW 2060, Australia
P +61 2 9922 4375 F +61 2 9929 5786 E info@marchesepartners.com.au
www.marchesepartners.com.au
Sydney • Brisbane • Canberra • Melbourne • Adelaide • Perth
Kuala Lumpur • Auckland
ABN 32 604 104 378

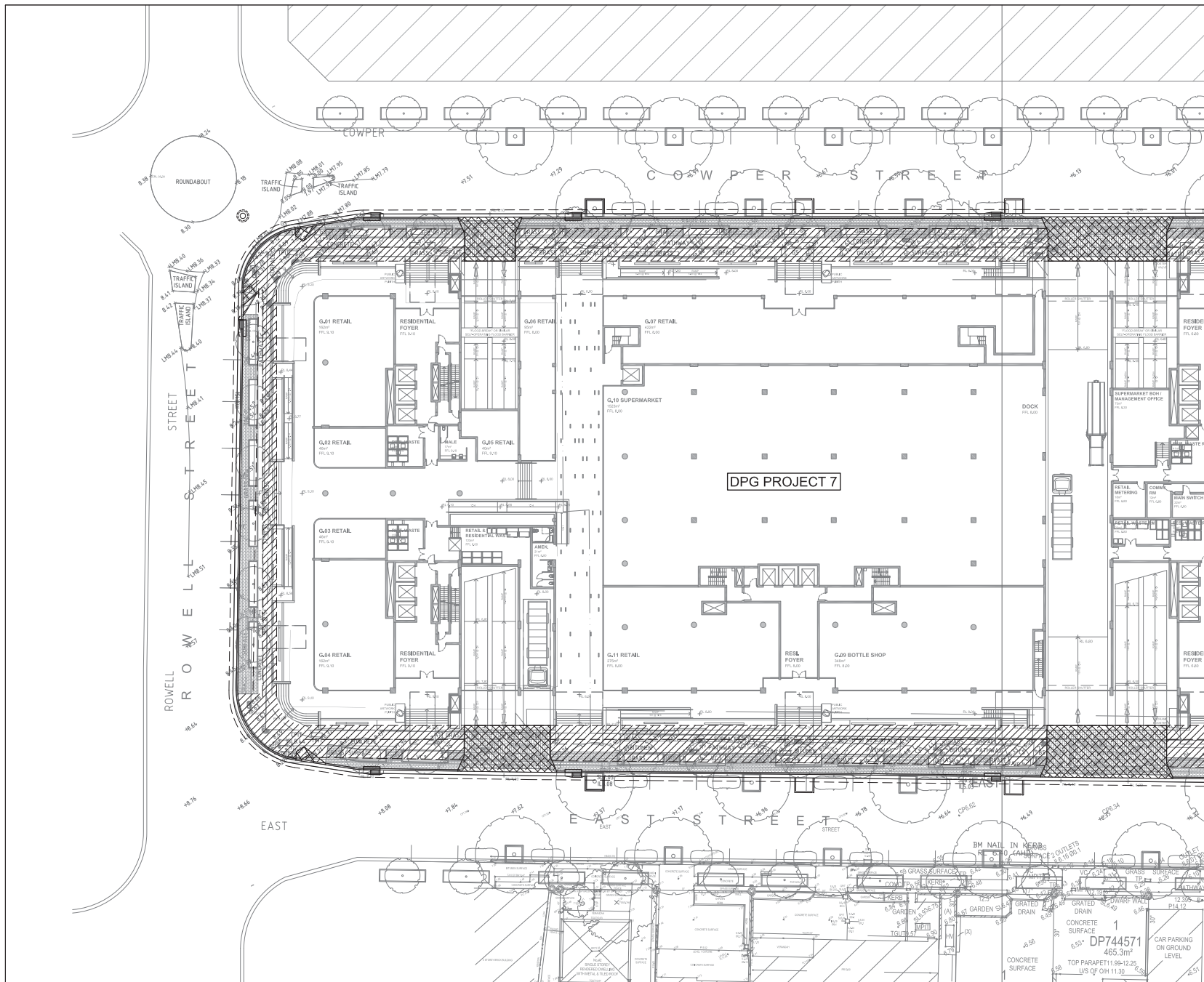
0 1 2 3 4 5 10
1:250

CLIENT
DPG PROJECT 7 PTY LTD

PROJECT
14-38 COWPER ST, 21-41 EAST ST,
5-5A ROWELL ST GRANVILLE NSW 2142

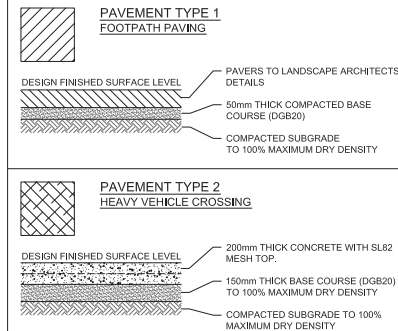
DRAWING TITLE
PUBLIC DOMAIN CIVIL WORKS
STORMWATER LONG SECTIONS - SHEET 3

SCALE AS SHOWN	DATE 10.11.2016	DRAWN TF	CHECKED LP
JOB 0991	DRAWING DA-C-323	REVISION D	



FOR CONTINUATION REFER TO C-602

PAVEMENT LEGEND



NOTE

1. NO WORKS ARE TO BE CARRIED OUT ON ADJOINING PROPERTIES WITHOUT EXPRESS WRITTEN OWNERS CONSENT AND DIRECTION OF SUPERINTENDENT
2. THIS PAVEMENT DESIGN IS SUBJECT TO GEOTECHNICAL PAVEMENT INVESTIGATION AND ADVICE ON CBR (%) CAPACITY OF THE SUBGRADE WITH LIME STABILISATION.
3. THE SELECTION OF PRIMER SEAL MUST TAKE INTO ACCOUNT THE TIME AFTER WHICH THE FINAL ASPHALT SURFACING WILL BE PLACED.
4. ALL GRANULAR MATERIAL MUST COMPLY WITH RMS SPECIFICATION 3051 AND DEVELOPER NEEDS TO PROVIDE EVIDENCE OF COMPLIANCE (TEST RESULTS)
5. ALL CONSTRUCTION WORKS MUST COMPLY WITH RELEVANT RMS SPECIFICATIONS (R106, R71, R117 ETC). THE DEVELOPER WILL NEED TO CONDUCT ALL TESTING REQUIRED BY SPECIFICATIONS AND PROVIDE EVIDENCE TO COUNCIL THAT SUCH TESTING HAS BEEN CONDUCTED AND RESULTS COMPLY WITH SPECIFICATION REQUIREMENTS.

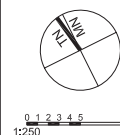
IMPORTANT NOTES:
Do not scale from drawings. All dimensions shall be checked on site before commencement of work. All discrepancies shall be brought to the attention of the Architect. Larger scale drawings and written dimensions take precedence. This drawing is copyright and the property of the author, and must not be retained, copied or used without the express authority of MARCHESE PARTNERS ENGINEERING PTY. LTD.

DEVELOPMENT APPLICATION

REVISION	DATE	DESCRIPTION	BY
A	2016.11.17	PRELIMINARY ISSUE FOR COORDINATION	LP
B	2016.11.17	DEVELOPMENT APPLICATION	LP
C	2016.11.17	DEVELOPMENT APPLICATION	LP
D	2017.02.03	DEVELOPMENT APPLICATION	LP

marchesepartners
engineering

Marchese Partners Engineering Pty Ltd
Level 1, 53 Walker Street, North Sydney, NSW 2060, Australia
P +61 2 9922 4375 F +61 2 9929 5786 E info@marchesepartners.com.au
www.marchesepartners.com.au
Sydney • Brisbane • Canberra • Melbourne • Adelaide • Perth
Kuala Lumpur • Auckland
ABN 32 604 104 378



CLIENT
DPG PROJECT 7 PTY LTD

PROJECT
14-38 COWPER ST, 21-41 EAST ST,
5-5A ROWELL ST GRANVILLE NSW 2142

DRAWING TITLE
PUBLIC DOMAIN CIVIL WORKS
PAVEMENT PLAN - SHEET 1

SCALE	DATE	DRAWN	CHECKED
1:250@A1 1:500@A3	10.11.2016	TF	LP
JOB	DRAWING	REVISION	
0991	DA-C-601	D	

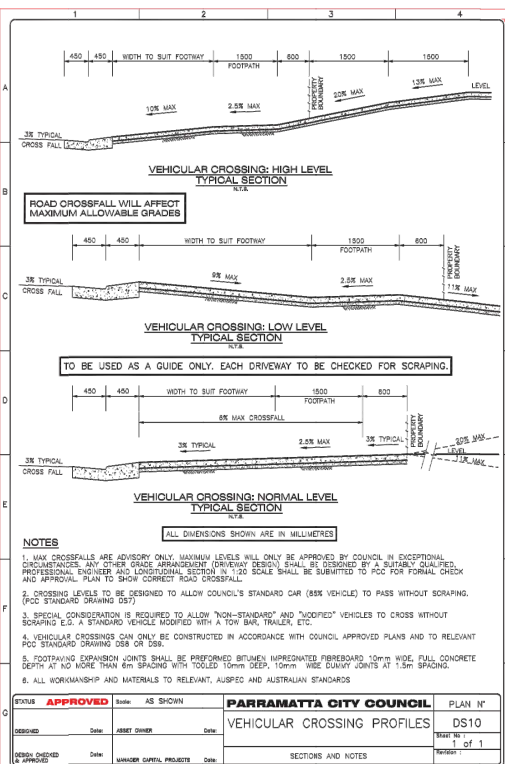
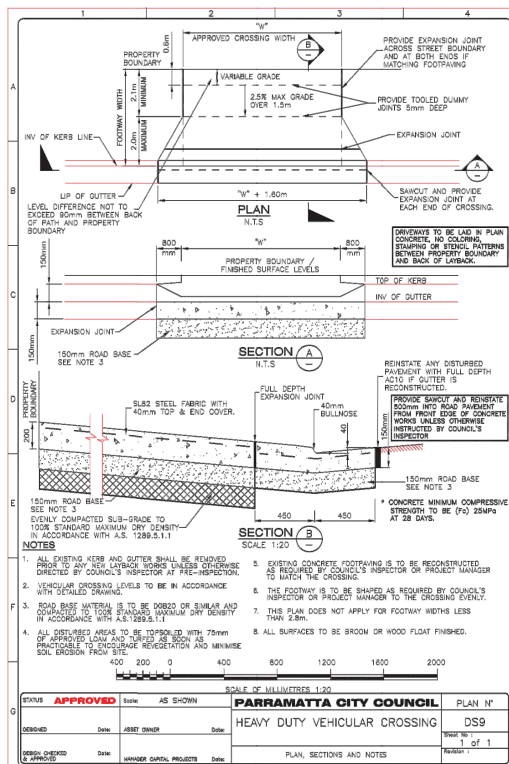


Figure 3.2 Typical Cross Fall Diagram: Priority B

Preferred where maximum allowable slope has to be achieved by providing maximum 2.5% cross fall for 1800 wide clear path of travel and 5% cross fall for the rest.

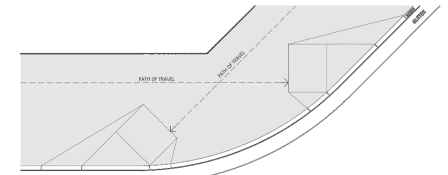
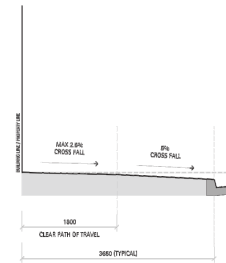


Figure 3.12 Kerb Ramps Aligned with Path of Travel: Example B

4. COORDINATE KERB RAMPS WITH THOSE ON THE OPPOSITE SIDE OF THE STREET
 Kerb ramps to be aligned across intersections as illustrated in Figure 3.13.

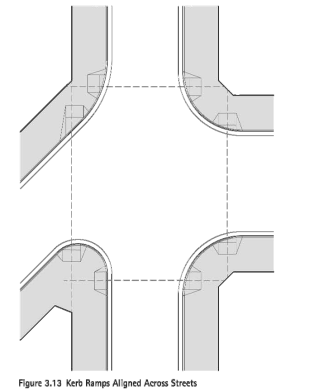
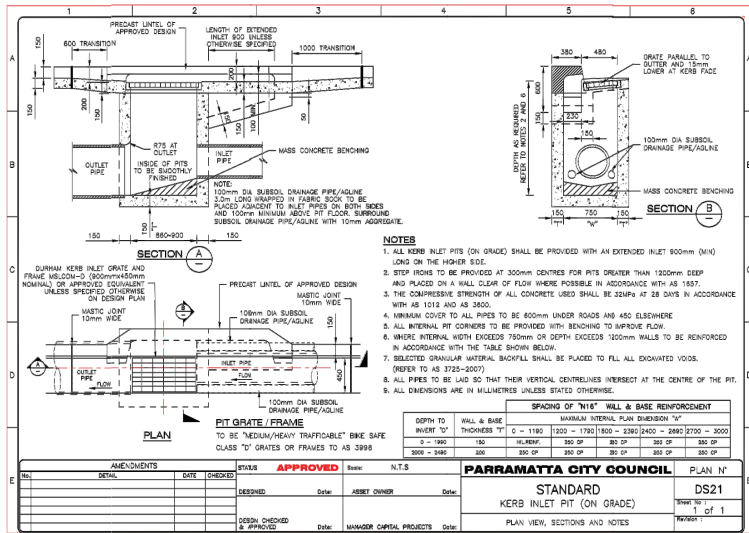


Figure 3.13 Kerb Ramps Aligned Across Streets



IMPORTANT NOTES:
 Do not scale from drawings. All dimensions shall be checked on site before commencement of work. All discrepancies shall be brought to the attention of the Architect. Larger scale drawings and written dimensions take precedence. This drawing is copyright and the property of the author, and must not be reissued, copied or used without the express authority of MARCHESE PARTNERS ENGINEERING PTY. LTD.

DEVELOPMENT APPLICATION

marchese partners
 engineering
 Marchese Partners Engineering Pty Ltd
 Level 1, 53 Walker Street, North Sydney, NSW 2060, Australia
 P +61 2 9922 4375 F +61 2 9929 5786 E info@marchesepartners.com.au
 www.marchesepartners.com.au
 Sydney • Brisbane • Canberra • Melbourne • Adelaide • Perth
 Kuala Lumpur • Auckland
 ABN 32 604 104 378

CLIENT
 DPG PROJECT 7 PTY LTD

PROJECT
 14-38 COWPER ST, 21-41 EAST ST,
 5-5A ROWELL ST GRANVILLE NSW 2142

DRAWING TITLE
 PUBLIC DOMAIN CIVIL WORKS
 DETAIL SHEET 1

SCALE
 N.T.S. @A1
 DATE
 10.11.2016
 DRAWN
 TF
 CHECKED
 LP
 JOB
 0991
 DRAWING
 DA-C-603
 REVISION
 D